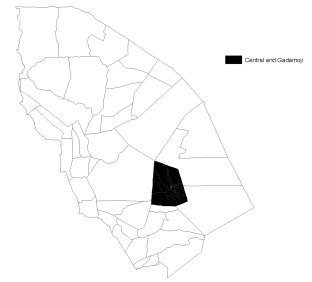


# Index in Central and Gadamoji

Data up to 28 Jul 2011 - 12 Aug 2011

This page provides the update on the predicted livestock mortality index and the summary of the underlying data in Central and Gadamoji for March - September 2011 (Long Rain Long Dry, LRLD) insurance coverage period based on the data up to 28 Jul 2011 - 12 Aug 2011. For information on the definition of these variables, see <http://hdl.handle.net/10568/3408>.



Central and Gadamoji

For the details on index color, [click here](#).

Table 1. Summary

Index Area	Central and Gadamoji
Year	2011
Season	LRLD
Date of the most recent data	28 Jul 2011 - 12 Aug 2011
<b>Predicted Livestock Mortality</b>	<b>0.22</b>
Czndvi_pre	-10.49
Czndvi_pos	-24.24
CNzndvi	13.96
CPzndvi	0.00

Figure 1. ZNDVI in Central and Gadamoji from October 2010 to September 2011

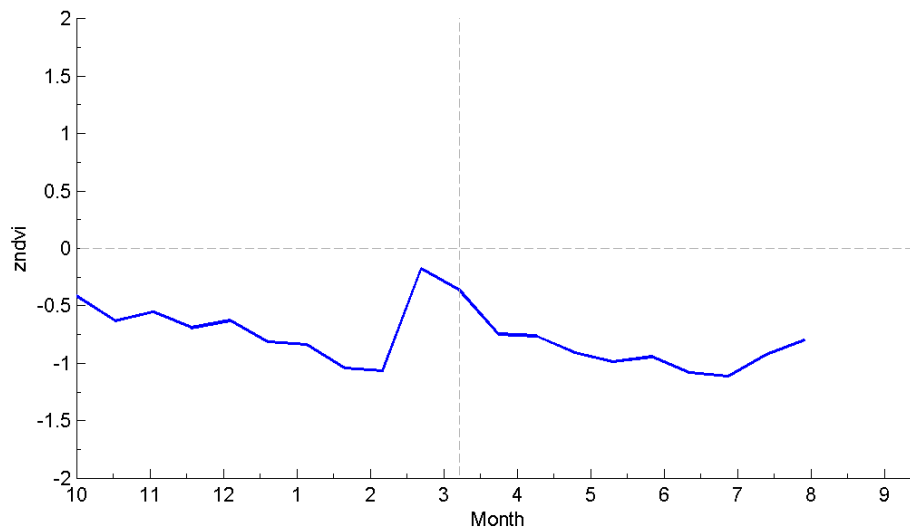
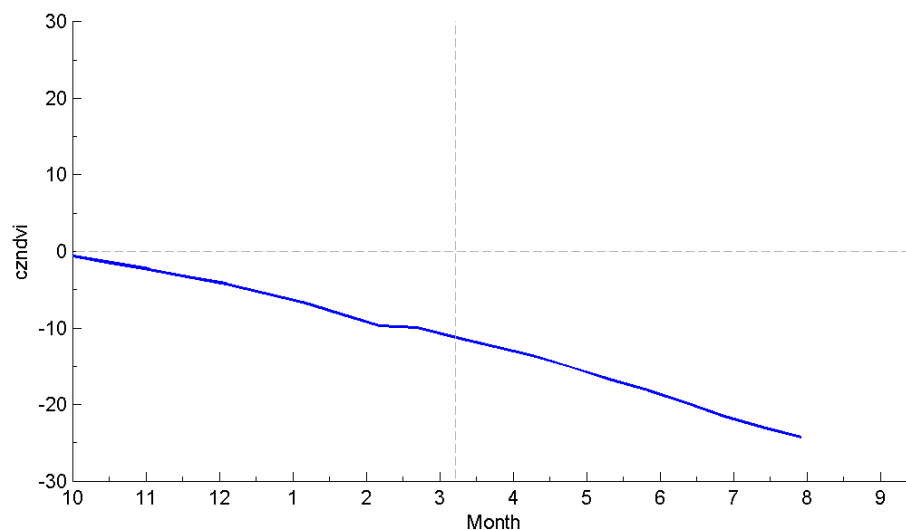


Figure 2. Czndvi in Central and Gadamoji from October 2010 to September 2011



**Table 2. zndvi**

year	month	16-day	date	zndvi
2010	9	18	30 Sep 2010 - 15 Oct 2010	-0.41
2010	10	19	16-31 Oct 2010	-0.63
2010	11	20	1-16 Nov 2010	-0.55
2010	11	21	17 Nov 2010 - 2 Dec 2010	-0.69
2010	12	22	3-18 Dec 2010	-0.63
2010	12	23	19-31 Dec 2010	-0.81
2011	1	1	1-16 Jan 2011	-0.84
2011	1	2	17 Jan 2011 - 1 Feb 2011	-1.04
2011	2	3	2-17 Feb 2011	-1.06
2011	2	4	18 Feb 2011 - 5 Mar 2011	-0.18
2011	3	5	6-21 Mar 2011	-0.36
2011	3	6	22 Mar 2011 - 6 Apr 2011	-0.75
2011	4	7	7-22 Apr 2011	-0.76
2011	4	8	23 Apr 2011 - 8 May 2011	-0.91
2011	5	9	9-24 May 2011	-0.99
2011	5	10	25 May 2011 - 9 Jun 2011	-0.94
2011	6	11	10-25 Jun 2011	-1.08
2011	6	12	26 Jun 2011 - 11 Jul 2011	-1.11
2011	7	13	12-27 Jul 2011	-0.93
2011	7	14	28 Jul 2011 - 12 Aug 2011	-0.80

For more information on the IBLI project, visit <http://livestockinsurance.wordpress.com>.