

1. Title

Spatial and temporal contrasts in the distribution of crops and pastures across Amazonia: a new agricultural land-use dataset from census data since 1950.

Authors : Imbach P.<sup>1\*</sup>; Manrow M.<sup>1</sup>; Barona E.<sup>2</sup>, Barretto A.<sup>3</sup>, Hyman G.<sup>4</sup>, Ciaï, P<sup>5</sup>.

(1) Tropical Agricultural Research and Higher Education Center (CATIE), Turrialba,  
Costa Rica

(2) GIS-Analyst, Independent Consultant, Miami FL, United States

(3) Brazilian Bioethanol Science and Technology Laboratory (CTBE), Campinas, Brazil,  
13083-970

(4) Decision and Policy Analysis Group, International Center for Tropical Agriculture  
(CIAT), Cali, Colombia

(5) IPSL – LSCE, CEA CNRS UVSQ, Centre d'Etudes Orme des Merisiers, 91191 Gif  
sur Yvette, France

\* Corresponding author. Email: [pimbach@catie.ac.cr](mailto:pimbach@catie.ac.cr)

This article has been accepted for publication and undergone full peer review but has not been through the copyediting, typesetting, pagination and proofreading process which may lead to differences between this version and the Version of Record. Please cite this article as doi: 10.1002/2014GB004999

## 2. Abstract

Amazonia holds the largest continuous area of tropical forests with intense land use change dynamics inducing water, carbon and energy feedbacks with regional and global impacts. Much of our knowledge of land-use change in Amazonia comes from studies of the Brazilian Amazon, which accounts for two thirds of the region. Amazonia outside of Brazil has received less attention because of the difficulty of acquiring consistent data across countries. We present here an agricultural statistics database of the entire Amazonia region, with a harmonized description of crops and pastures in geospatial format, based on administrative boundary data at the municipality level. The spatial coverage includes countries within Amazonia and spans censuses and surveys from 1950 to 2012. Harmonized crop and pasture types are explored by grouping annual and perennial cropping systems, C3 and C4 photosynthetic pathways, planted and natural pastures, and main crops. Our analysis examined the spatial pattern of ratios between classes of the groups and their correlation with the agricultural extent of crops and pastures within administrative units of the Amazon, by country and census/survey dates. Significant correlations were found between all ratios and the fraction of agricultural lands of each administrative unit, with the exception of planted to natural pastures ratio and pasture lands extent. Brazil and Peru in most cases have significant correlations for all ratios analyzed even for specific census and survey dates. Results suggested improvements and potential applications of the database for carbon, water, climate and land use change studies are discussed. The database presented here provides an Amazon-wide improved data set on agricultural dynamics with expanded temporal and spatial coverage.

### 3. Introduction

The Amazon basin holds around 8 million km<sup>2</sup> of forests comprising the largest continuous area of tropical forests and an important global carbon reservoir. Recent rates of forest loss make this region one of the deforestation hotspots at the global scale [Baccini *et al.*, 2012]. Land cover change in Amazonia can induce feedbacks on global [Cox *et al.*, 2000, 2004] and regional [Makarieva and Gorshkov, 2007; Loarie *et al.*, 2010] climate by inducing reduction of evapotranspiration and increasing vegetation albedo where short vegetation replaces tropical forest with generally a feedback to decreased regional precipitation [Bonan, 2008] and CO<sub>2</sub> emissions to the atmosphere. The type of vegetation replacing forests, for example crops or pastures, plays an important role in these climate feedbacks [Loarie *et al.*, 2011].

Although deforestation during the last century in Amazonia has been largely attributed to pasture expansion [Houghton, 2010], recent research suggests complex dynamics of land use change where crops and pastures play direct and indirect roles in deforestation, for example, by replacing forests or pushing other land uses into forest areas respectively [Morton *et al.*, 2006; Barona *et al.*, 2010; Lapola *et al.*, 2010; Macedo *et al.*, 2012]. Furthermore, understanding drivers of land use change can help improve the development of future land use change scenarios for the Amazon region [Soares-Filho *et al.*, 2006; Lapola *et al.*, 2010; Le Page *et al.*, 2010; Arima *et al.*, 2011] by accounting not only for deforested areas but also for type of vegetation and land uses that replace forests.

The objective of this study is to develop a spatial dataset of the historical distribution of crops and pastures across Amazonia using agricultural census and survey data that cover all Amazonian countries. We expect this work to be used as a source of data to improve studies on vegetation-climate feedbacks, carbon dynamics and to set the basis for refinement of

future land use change scenarios.

#### 4. Materials and methods

##### 4.1. Agricultural census and survey data and maps of administrative units

We systematized historical crops and pastures data from agricultural census for countries within Amazonia. The study area corresponds to boundaries defined by other important Amazon modeling initiatives [Soares-Filho *et al.*, 2006], except for Guyana and French Guiana, whose share of agricultural lands within the basin is less than 1.5% of total non-forest lands (for 2008, Table 1). For each available census or survey we collected total area for each crop, pastures, fallow and abandoned lands, forest areas (within the productive units), livestock and number of farms. Only main crops types were available from Brazil, although we could not find the definition used by IBGE (Brazilian Institute of Geography and Statistics) to select those on each census. Scientific names of crops were systematized from common names reported by data providers. They were then classified by C3/C4 photosynthetic pathways as well as by annual or perennial cropping systems. Historical changes of the administrative unit areas and boundaries were, in some cases, reconstructed to match census data with administrative boundaries and spatial location for the corresponding dates.

Most census and survey data began to be widely available in the second half of the last century, starting in 1950 and obtainable up until the present day (Peru has an earlier census in 1929 that was not available). Specific dates of available agricultural census and surveys for each country are shown in Table 2. Agricultural census for Brazil (1960), Ecuador (1974) and Peru (1961, 1972) were digitized from original source documents available from national statistics institutes. The rest were available from online sources (Table 3). Maps of administrative units were usually available in vector format for the more recent dates.

Data has been matched with maps at the second administrative unit level in most cases (i.e. municipality level or similar), except for Colombia, Suriname and Ecuador where only the first level data on administrative boundaries was available (departmental). Because administrative units are divided into smaller ones forward in time, the development of the administrative unit maps that match each census date was often based on aggregating municipalities into larger original units. We started with the most recent existing official map in digital format and reconstructed the past administrative maps backwards in time for each census date based on scanned political maps. The adjustments account for a reconstruction of municipality boundaries, for example, based on historical political maps or relational keys depicting boundary evolution as municipalities become sub-divided into smaller sized units (details on methods and data sources in Table 3). The 1995 data set for Colombia has aggregated data for all Amazonian departments from agricultural surveys and department values were derived proportional to the area of each administrative unit.

For Brazil data from 1995, 2000 and 2006, this study is based on the work of *Barona et al.*, [2010] which relied on systematized surveys, censuses and databases from the Brazilian Institute of Statistics and Geography [*IBGE-SIDRA*, 2006]. In order to obtain consistent data, they aggregated units to match boundaries of the coarsest unit across these three dates. For the 1960 and 1975 census dates in Brazil, we used a municipality relational key that indicates the aggregation/disaggregation of municipalities through time [*Reis et al.*, 2011; *Barretto et al.*, 2013]. Administrative unit reconstruction for Peru (1961, 1972) and Bolivia (1950) was done by using scanned political maps from dates as close as possible to census dates. In a few cases where we lacked information about boundary changes across time, spatial units and census/surveys data were further aggregated into known coarser units. We lacked data for some census-date combinations: in Brazil 1960 (1 municipality) and 1975 (3), Bolivia 1984 (11), and Peru 1961 (15), 1972 (7), 1994 (1) and 2012 (1). These gaps represent 13% of the

country area within our study area in Bolivia for the 1984 census and 6% of the country area in Peru for the 1961 census. Boundary data for administrative unit AMC6097006, in Brazil 1960, was missing and values assigned to nearby municipalities and it is a known source of error.

Censuses do not always report the same variables and gaps in variables exist across countries and dates. For example, fallow lands are only reported in Peru (all censuses), Venezuela 2008, Ecuador 2000 and Bolivia 1984 (Table 1 in supplementary material).

#### 4.2. Systematization of crop data

Census data collected information for a total of 407 crop types for which we identified 216 here with their scientific names and family in order to harmonize all censuses data. We did not identify in the literature 191 crops from Peru 2012 and 1994 (172 and 19 crops, respectively). All crops not identified were aggregated to the “others” census category which covers <6.8% of any of the country’s total agricultural areas. Peru 2012 reports 2334 associated crops that were not identified by scientific name representing 8% of total croplands. Bolivia reports 13.4% of total cropland areas with crop associations whose crop types are not described in the census.

Crops across countries and census dates were aggregated into three groups (details in supplementary material, Table 2). The first group aims at distinguishing annual and perennial crop types. Perennial crops refer to long-term cultivation systems that do not require replanting after harvest, such as coffee, and cocoa. Annual crops require replanting after harvest with yearly cycles. Sugarcane was the only crop with inconsistent classification across censuses, being classified as perennial in Colombia and annual elsewhere. The second group separates crops by C3 and C4 photosynthetic pathways. Finally, the third group is related to the physiognomic component of importance for consumption or industrialization

(cereals, fibers, flowers, fruits, herbs, industrials, legumes, nuts, tubers, vegetables and other).

A detailed description of this grouping is excluded in the following sections but available with the dataset. Finally, scientific names were collected for each crop type from several online sources. The number of cattle units and fallow lands in each administrative unit was also collected and presented in Figure 1 and 2 of the supplementary material.

Each one of these groups, except for the physiognomic one, and its evolution in time is presented here by municipality, country and for the whole Amazonia in terms of their fractional coverage. Crop fractional coverage is presented as the ratio of cropland to pasture area (CPR), perennial to annual crops area (PAR), and C4 to C3 photosynthetic pathways for agricultural areas (C4C3R) not including pastures. We also present the planted to natural pastures ratio (PNP). Natural pastures are defined in censuses as pastures that were not planted by farmers and therefore can include both native grasslands and those that have been degraded and are now covered, for example, with invasive species. We present municipality ratios and their spatial correlation with the fraction of total agricultural lands per municipality as a preliminary exploration of the dataset. Agricultural lands account here for both pastures and croplands. We also present main crops maps, where “main” indicates for those crops whose total aggregated area accounts altogether for at least 70% of the total cropland area of Amazonia.

## 5. Results

### 5.1. Spatial and temporal resolution of census data

Available agricultural censuses for the Amazon basin cover the second half of the 20<sup>th</sup> century from 1950 (in Bolivia) until 2012 (Peru). Brazil has the most systematic record with censuses every decade (6 in total, see Table 2) during this period, followed by Peru with 4 censuses (Table 2). Other countries have only one or two dates of census available (Table 2). Ecuador has the older latest census in 2000. For Brazil, Peru and Bolivia a few departments

had no data on specific census dates, leaving a few areas with a lower census count than the rest of the country.

All countries tend to increase the number of administrative units with time and therefore the mean size of an administrative unit decreases with time (Table 4). Brazil, after 1995, has constant administrative units since [Barona, 2009] standardized maps for all the dates after 1995. Bolivia and Peru tend to have small changes in the size of administrative units. Ecuador has the smallest number of units and the largest mean size (except for Brazil in 1960).

## 5.2. Crop types

Across all censuses and surveys we identified 216 crops from 84 families. The most important families were Leguminosae (16 crop species), Graminae (7 species), Rosaceae (11 species), Solanaceae (11 species), and Rutaceae (9 species). We grouped these crops into 137 annual and 79 perennials crops (Table 2 in supplementary material). In the case of Brazil only the most important crops (as selected by IBGE) are accounted for, leaving country level comparisons biased, since usually crops total area are highly uneven. The number of unidentified crops is larger than the 19 aggregated here since the “other crops” category already exists in censuses. The total area within this category covers a relatively small fraction of the Amazon basin, less than 1.2% or less than 6.8% of total agricultural or crop lands respectively across all the countries.

## 5.3. Agricultural lands

The distribution of agricultural land across all the municipalities within each country is presented in Figure 1. The increase of agricultural land fraction over time suggests poles of deforestation from: (i) the Andean Cordillera to Amazonian lowlands, a North-South axis over the western side of the region along Peru, Colombia and Ecuador, (ii) from the South



and East of Brazil to central Amazonia, (iii) from the North to South in Venezuela and, (iv) from the Atlantic coast along the Amazon River (Fig. 1).

Brazil shows the largest variation of agricultural area across its municipalities (followed by Peru) with a larger range of values compared to other countries (Fig. 3 in the supplementary material). The distribution of agricultural land for Colombia and Ecuador is calculated from a small total number of administrative units (Table 3) and are thus difficult to compare with the one of other countries. Bolivia and Peru show a decrease of the variation of agricultural land for more recent times, suggesting some convergence among municipalities. Fallow land areas are relatively smaller compared to agricultural lands (we currently do not include fallow lands as part of agricultural lands, see Fig. 2 in supplementary material).

#### 5.4. Crops and pastures

The cropland to pastureland ratio (CPR) and total agricultural land, including both natural and planted pasture according to censuses, of each country are shown in Figure 2. As expected all countries increased their agricultural lands with time, except for Colombia that shows a 30% reduction between 1995 and 2008 (Fig. 2). All countries across the whole period have an area of pastures (including natural and planted productive pastures) at least four times larger than croplands (CPR ratios  $<0.25$ , Fig. 2), except for Venezuela (2008) where CPR is 1.6. Colombia has the lowest CPR (0.04-0.05) and Peru and Venezuela have the highest (0.19-0.25 and 1.6 respectively). Peru has a decreasing trend of CPR during 1960-1970, followed by an increase in the later censuses of 1994 and 2012. Brazil shows an increasing trend of CPR, except for a drop in 1980, resulting into a near doubling of CPR from 0.1 to 0.19 between 1960 and 2006 (Fig. 2). Colombia (1995-2008) shows decreasing CPR with time. Bolivia shows no trend (1950-1984; see Table 3 in supplementary material). Although Brazil has the largest fraction of agricultural lands within the basin across the whole period, Bolivia and Peru (which together have a share of only 1.47% of the whole

basin agricultural lands) combined aggregated a similar amount of agricultural lands than Brazil (2.08%) during the period 1950-60's (Fig. 2). Between 1960 and 1975 Brazil's agricultural lands sharply increased to cover 4.12% of the country, further increasing to 9.06% in 2006. The contribution of Ecuador to agricultural land fraction always remained relatively small (<0.05%). Bolivia, Colombia and Peru have a similar share of agricultural lands in more recent times (since the 1980's) ranging between 0.72 and 1.23%.

Although country level CPR always show a larger area of pastures relative to croplands, there are large variations within each country. In each country, several municipalities show high CPR values, as seen from the distribution of CPR among municipalities in Figure 4 of the supplementary material. Particularly in Brazil (1960), Peru (1961), Bolivia (1984) and Colombia (2008). For example, the maximum CPR found was for Casiquiare in Venezuela 2008 (CPR=4537), which resulted from 0.05 ha of pastures and 227 ha of cropland areas. Still, all countries have municipalities with larger crops than pastures area, except for Colombia 1995 (Fig. 4, supplementary material).

We found significant a ( $p < 0.0001$ ) negative correlation (Spearman ranked correlation coefficient) of -0.43 between CPR and the fraction of agricultural land of the municipalities, using data for all countries and years in the regression (Fig.3, Table 5). Country-specific correlations between CPR and the fraction of agricultural land (all years,  $p > 0.0001$ ) for Brazil (-0.42) are close to the average of all Amazonian countries (Fig. 3). The correlations obtained from Brazilian municipalities across years have values similar than when using the full dataset, suggesting that Brazil probably drives the Amazonian average correlation value, since it has the largest number of municipalities. Correlations for Peru are more negative than the average (-0.73) of Amazonia. In Peru, these correlations increased with time from -0.70 to -0.77, except in 1972 (Fig. 3, Table 5). Other countries have non-significant correlations, probably due to their smaller number of observations. This result suggests that, as the

agricultural frontier advances in each municipality, the extent of pastures increases relative to crops. Importantly, an opposite relationship is found in the southern part of the Mato Grosso state in Brazil (a northwest to southeast axis between Sorriso and Alto Taquari municipalities) where CPR increased with increasing fraction of agricultural land (Fig. 3).

#### 5.4.1. Pasture lands

Census data distinguishes between planted and natural pastures in most cases, except Bolivia 1950. *Barona et al.*, [2010] used aggregated data for both pasture types for Brazil in 2000. Natural pastures usually dominate the total pasture land areas. For example, Peru and Bolivia have over 94% of its pasture lands with natural pastures across all censuses. Suriname 2009 and Venezuela 2008 have 68 and 73% of its pastures lands with natural cover. Brazil shows a strong decrease in the fraction of natural pastures from 95% in 1960 to 20% in 2006 with the largest changes in southern municipalities of our study area (Fig. 4) (see Table 3 in supplementary material). Colombia and Ecuador have less than 10% of natural pastures. Cattle number per hectares of pastures (Figure 1 in supplementary material) increases over time with a rather higher density over Brazil since 2000 and lower elsewhere (over highland countries probably due to increased density of other species), except for southern Bolivia in 1984 showing relatively high values. Cattle number showed significant correlations with the fraction of pastures of the municipalities, particularly for Brazil (decreasing trends with time) and Peru (increased trends with time, except for 2012; data not shown).

PNP variability across municipalities is largest for Peru (and increases with time) and Bolivia and smallest for Ecuador and Colombia, probably due to the small number of municipalities. Brazil variability is reduced in more recent census. Only Brazil in 1995 and 2006, Ecuador and Colombia have a larger fraction of their PNP values above 1 (Fig. 5, supplementary material).

PNP shows no significant correlation for the global dataset (including all censuses and dates) probably as a result of correlations between Peru and Brazil (the only two countries with significant correlations) of opposite sign (0.20 and -0.69 for Brazil and Peru respectively) (Table 5). Brazil's lower correlation for grouped censuses data results from opposite correlation signs across census dates from negative significant values in 1960, no significant trends in 1975 and 1980, and increasing positive correlation values in 1995 and 2006. Peru has negative significant correlation values across all census dates indicating that the fraction of natural pastures increased as the fraction of total pasture lands increased for each municipality (Table 5).

#### 5.4.2. Perennial and annual cropping systems

Amazon mean perennial to annual crop ratio (PAR) shows a larger fraction of annual crops (mean municipalities PAR values and standard deviation of  $0.32 \pm 3.92$ ). Mean PAR values and standard deviations between countries varies between  $0.11 \pm 0.06$  and  $0.72 \pm 6.40$  (for Venezuela and Bolivia respectively) while Ecuador mean PAR is an outlier at  $1.99 \pm 1.46$ . Brazil seconds in variability with a mean value of  $0.223 \pm 3.97$ . PAR values for specific dates remain between 0.01 and 0.85 for all countries and standard deviations in the same order of magnitude, except for Peru 2012 ( $1.08 \pm 2.29$ ), Ecuador 2000 ( $2.75 \pm 1.43$ ), Brazil 1980 ( $1.18 \pm 9.62$ ), and Bolivia 2005 ( $1.57 \pm 1.47$ ). Brazil has mean PAR values of  $\leq 0.7$  across all censuses except for 1980 showing a large increase in mean values (see Table 3 in supplementary material). Brazil 1980 also shows one of the largest dispersion in municipality values contrasting with other census dates that have the lowest dispersion. Venezuela, Ecuador, and Colombia also have the lowest value dispersion, probably due to the small number of municipalities within the study area (Fig. 6, supplementary material).

A significant negative correlation of -0.31 was found between PAR and the fraction of agricultural lands of the municipalities of Amazonia. This indicates that as the fraction of

agricultural lands increases in each municipality, the ratio of perennial to annual crops tends to decrease (Fig. 5). The spatial pattern of PAR is relatively stable over time (Fig. 5), with a larger ratio of perennial to annual crop areas mostly over Peruvian lowlands where municipalities seem to increase annual crops fraction over time. Country level correlations between PAR and agricultural land fractions are only significant ( $<0.0001$ ) for Brazil and Peru (-0.37 and -0.64, respectively). These correlations are also stable between decades, ranging between -0.38 and -0.77 in both countries. Brazil 1960 was found without significant correlation.

#### 5.4.3. Photosynthetic pathways

The Amazonia mean C4 crop type to C3 crop type ratio (C4C3R) is  $0.64 \pm 3.54$ . The fraction of C3 crops is thus on average larger than that of C4 crops, and stable values of the C4C3R ratios are found across countries and decades, ranging between  $0.2 \pm 0.09$  and  $1.0 \pm 7.07$  for Venezuela 2008 and Brazil 2006, respectively. The distribution of the C4C3R ratio across individual municipalities also shows a large range (Fig. 7, supplementary material). A weak positive correlation (0.20,  $p < 0.0001$ ) was found between C4C3R and the fraction of agricultural lands across all municipalities of the dataset (Table 5 and Fig. 6). Statistically significant correlation values are also found at country scale in Peru (0.25) and Brazil (0.20) that have enough municipalities to calculate a correlation. The correlation between C4C3R and agricultural land fraction does not seem to change much over time, with values ranging between 0.35 to 0.18. Only Brazil has significant correlations and 1980 shows a contrast with C4C3R of -0.26 (Table 5).

#### 5.4.4. Main crops

Cassava, potato, cotton, rice, corn, wheat, and soybean were found to be the main crops of Amazonia. Main crops are defined as those crops whose total aggregated area over a two-decade period account for at least 70% of the total cropland area of Amazonia. Their spatial

distribution is shown in Figures 7 and 8 (and Fig. 8-12 of the supplementary material). We found that the number of main crops tends to diminish from 6 during the 1950-60s to 3 in the 2000s when soybean, corn and rice, in the same order of importance, account for 78% of Amazonian croplands.

Cassava is an important crop (in terms of area relative to croplands) in municipalities with lower fraction of agricultural lands (Fig. 8, supplementary material). Cassava is clearly important for subsistence and shifting cultivation farmers in forest frontier municipalities [Simon *et al.*, 2005]. Potato belongs mainly to highlands of Peru and Bolivia and is almost non-existent elsewhere, probably due to cold climate requirements (Fig.7). Cotton seems important in mid-altitude Peruvian municipalities but mostly in southern Mato Grosso state in Brazil since 1990, and Southeast Maranhão state in 1950-60s (Fig. 9, supplementary material). Rice is restricted to lowlands, due to crop climate requirements, and is found mostly in municipalities with larger fraction of agricultural lands (Fig. 10, supplementary material). The fraction of rice cultivated areas shows a peak in 1970-80s and declined afterwards, although with widespread distribution, in more recent times. Wheat belongs mostly to high-lands of Peru and Bolivia, with a declining relative importance since the 1990s compared to the 1950-1980 period in those areas (Fig. 11, supplementary material). Corn has a widespread distribution in municipalities with both high and low fraction of agricultural lands (Fig. 12, supplementary material). Soybean shows a sharp increase over southeastern Brazil since the 1990s, and more recently also in the northern Brazilian state of Roraima (Fig. 8).

## 6. Discussion

We compiled and harmonized a new agricultural land use dataset that characterizes crops and pastures in Amazonia according to cropping system (annual or perennial), photosynthetic pathway, and crop physiognomy based on successive agricultural censuses and surveys in

countries of the Amazon basin since 1950. Our dataset incorporates seven countries within Amazonia, providing a new information resource that treats the entire region. The legal Amazon in Brazil has been the main focus in most of the literature, even though it only covers around two thirds of the region. Although similar studies have covered larger spatial domains (i.e. [Ramankutty *et al.*, 2008]), specific dates (i.e. [Morton *et al.*, 2006; Macedo *et al.*, 2012]), or disaggregated spatial distribution of census data using land cover maps from remote sensing [Cardille and Foley, 2003], we present here a unique dataset in terms of its temporal and spatial coverage. We have harmonized data from all existing censuses and surveys and reconstructed (in most cases) the boundaries of corresponding administrative units (to their 2<sup>nd</sup> level or municipalities). We have also systematized scientific names for all reported crops across countries to facilitate further use of the dataset.

The lack of data quality assessments on the used sources limits an uncertainty quantification, since census validation efforts were not reported. Comparison with previous census or other data sources (i.e. surveys) has been used to identify systematic errors [Wunder, 1999]. Brazil census data quality on crops and pastures (both planted and natural) is expected to be reliable, in particular for recent times (since 1995) as increased funding augmented the number of units directly sampled [Cardille and Foley, 2003]. According to Cardille *et al.*, [2002] census officials report that crop planted area is reliable for the census date, particularly for farmers having access to formal financial aid, although inter-annual variability of crop areas can be high compared to pasture areas which are more stable. Identifying uncertainties on data collected for intercropped systems presents varying degrees of difficulty, for example, some census (Bolivia 1950, 1984, Peru 1994, 2012, Ecuador 2000) identified associated crops separately (from annual or perennial only areas) although not always identifying the specific crops species associated (we only included total areas for associated crops). Peru 1961 does not report crop associations. Crop planted areas (as provided in this dataset) usually refer to

the area at the time of the census and does not account for crops or pastures that might replace or share the same land at other times (i.e. of the same year) [Ramankutty *et al.*, 2008] which potentially induces to double counting issues for other census variables (i.e. harvested area) where the same area is accounted for more than one crop (A. Simões, personal communication with IBGE, 2015) [Monfreda *et al.*, 2008]. Bolivia (any date) and Colombia 2008, for example, do not distinguish between planted and harvested area. For Brazil (any date) and Ecuador 1974 when permanent crops (with cropping cycles longer than one year) were intercropped with annual crops in a specific farm, only the permanent crop type and its area was reported (personal communication) reducing the potential effects of double-counting issues in our dataset. For other dates this is not clarified (Peru 1961 or Suriname 2009). Approaches to correct for double-counting have been attempted, for example, by assessing the potential for multiple cropping systems based on agro-climatic variables [Monfreda *et al.*, 2008]. Data collection/reporting issues [Monfreda *et al.*, 2008] should be further explored, for example unrealistically high livestock number per unit of area in municipalities with relatively small agricultural land fractions in central Amazonia, which should be treated accordingly as spurious in the dataset. The area of a census establishment (i.e. farm) is assigned to the municipality where the headquarters of the farm is administratively located, or where most of the farm area is located if there is no administrative address (personal communication). This could explain fractions of agricultural lands larger than the municipality (Fig. 1) in our dataset. Similar datasets types have been used in combination with land cover data to understand deforestation drivers in Amazonia, for example, between 1980-1995 for Legal Amazonia (smaller region than the one studied here) where net increases in agricultural lands were attributed to crop expansion, increase in planted pastures (through deforestation) and decrease in natural pastures (abandoned grasslands and savannah) [Cardille and Foley, 2003]. These approaches used municipality level census data to estimate



land use proportions (similar to the data presented here) that are then assumed to be equally distributed across the agricultural matrix from remote sensing [*de Espindola et al.*, 2012] while others developed more complex models to assign land use classes across remotely sensed land use types [*Cardille and Foley*, 2003; *Leff et al.*, 2004; *Monfreda et al.*, 2008].

Other studies have performed analysis using some of the sources presented here with a focus on finding deforestation drivers, with findings similar to those presented here. For example, an increasing CPR over Mato Grosso concurred with an increased share of soybean farms on agricultural lands for 2006 [*Macedo et al.*, 2012] and potential pastures displacements into Pará [*Barona et al.*, 2010], Rondonia and Amazonas [*Arima et al.*, 2011] where we found a decrease in CPR. Our data shows that nearby areas in southern Tocantins and Maranhao also show a sharp increase in soybean areas while keeping constant CPR values, potentially indicating different dynamics. The decrease in CRP for Brazil 1980 census (Fig. 2) results from a general wider distribution of croplands across every state, something that was reversed in the following years [*Leite et al.*, 2012].

Negative correlations found in Peru between PNP and the fraction of pasturelands of the municipalities could indicate that increased areas of productive pasture lands occur over natural pastures (over highlands) that are not accounted in censuses when not under productive systems. Natural pastures were the dominant land use since 1940 in Brazil, with expanding areas and intensity until 1970 when planted pastures appeared and began replacing natural pastures in 1980 [*Leite et al.*, 2012]. This shifting trend can explain the change in correlation sign between PNP and the municipality fraction of pasturelands.

Effects of historical land cover change on climate have been studied at the global [*Cowling et al.*, 2007], regional [*Beltrán-Przekurat et al.*, 2012] and local scales [*Arvor et al.*, 2012; *Dubreuil et al.*, 2012], where the replacement of forests by crops and pastures in Amazonia and its climate feedbacks could trigger a future *savannization* trend in the region [*Pires and*

Costa, 2013]. Furthermore, the fraction of crops and pastures and their parameterization in land surface models has been identified as an important source of uncertainty in attribution studies of global land use change on regional climate [Pitman *et al.*, 2009]. The temporal and spatial CPR trends presented here extends for the first time to the whole basin, instead of Brazilian Amazonia where most of the literature focuses. The data has high potential for further analysis, in particular before 1980, when the extent of agricultural land within the Amazon basin was shared by several countries in relatively similar magnitudes, while for later dates Brazil dominates.

C4C3R data could also support studies on land use change feedbacks on Amazonian climate. Previous research found a decrease in surface temperature when crops replace C3 grasslands and an increase when crops replace woody vegetation or C4 grasslands, due to higher LAI in C4 grasslands compared to C3 type crops. These results are related to a change in the Bowen ratio resulting from increased latent heat. Effects on precipitation were relatively smaller [Beltrán-Przekurat *et al.*, 2012] although other authors found regional effects on precipitation due to C4-vegetation presence [Cowling *et al.*, 2007].

The distribution of C3 and C4 vegetation types also determine differences in the exchanges of CO<sub>2</sub>, water and energy between land and surface. Amazonia mean (across all periods) C4C3R  $0.64 \pm 3.53$  shows a larger fraction of C4 agriculture than the global C4C3R ratio of 0.19, according to Still *et al.*, 2003, with only Venezuela 2008 approaching the global average. Our municipal scale data could help improve carbon studies that have so far used the coarser level C4 crop fractions on their analysis [Still *et al.*, 2003; Gibbs *et al.*, 2008; Monfreda *et al.*, 2008; Meiyappan and Jain, 2012] losing detail on the spatial patterns and across time at least for Amazonia. Errors due to lack of data on natural C3/C4 mixed grasslands is expected to be non-significant since they mostly belong to extra-tropical areas, except for a narrow strip over the Andes in our study region [Sterling and Ducharne, 2008].

Further disaggregation of the pasture class by photosynthetic pathway could be based on temperature gridded data [Monfreda *et al.*, 2008].

It is worth noting that changes in the area of forests, crops and pastures patterns can only be explained by a combination of policy, accessibility, biophysical and socio-economic drivers framed in historical pathways of change [Soler *et al.*, 2009] therefore the temporal coverage of census data presented here could prove valuable. Our longer temporal and spatial approach could serve the purpose of understanding trends in less recently deforested lands where most of the forest was lost a few decades back. More research is needed to understand land change dynamics within non-forest frontier municipalities. This can help understand indirect causes of deforestation as well as dynamics between crops and/or pastures over heavily intensified municipalities.

CPR analysis can also help understand land use change dynamics. For example, in Mato Grosso pastures remain the dominant land use after deforestation, although an increased rate of conversion of forest to croplands (combined with pastures to crop transitions) was found in the early 2000s, probably driven by high soybean prices, that resulted in increased CPR values over Mato Grosso for 2006 [Macedo *et al.*, 2012; Fig. 3]. Furthermore, during the first half of the 2000s the absolute increase in croplands in Mato Grosso was mainly from replacing pastures (76%) than by replacing forests (26%). This was the case especially in later years (2006 onwards) when 91% of the expansion occurred on previously cleared lands due to a decline in commodity prices and policy measures to decrease deforestation rates [Macedo *et al.*, 2012]. However, the data presented here cannot capture gross gains or losses in areas between crops, planted/natural pasture lands needed to explain deforestation drivers and further refinement using remote sensing data is required. Accounting for fallow lands could be also helpful in this sense and is a potential improvement of the database presented here.

Crops type data has been also useful to understand land use change drivers, for example, the increase in soybean, cotton and corn fraction in Mato Grosso (Fig. 8, and Fig. 9 and 12 in the supplementary material) resulted from an increase in agricultural intensification where areas with double cropping systems (soybean-corn or soybean-cotton on each year) increased from 6 to 30% between 2000 and 2007 [Arvor *et al.*, 2012]. Productivity data (not presented here) is also needed since it has been the driver for increased soybean production (i.e. record production in 2009/10) instead of deforestation, in Mato Grosso and Rondonia [Rudorff *et al.*, 2011].

Verburg *et al.* [2011] discussed land use/cover data issues for global change studies highlighting temporal, spatial, and thematic/definition consistency issues. Temporal issues to address in future uses of our dataset relate to the lack of systematic dates where long periods without data between two census dates could potentially hide changes in land use dynamics. Changes in the census field implementation (not always documented) also induce a temporal bias. For example, the level of resources and effort allocated to the production of each census or differences in the date/season represented by the census which may produce land use bias in areas of multiple cropping [Wunder, 1999]. Studies aimed at analyzing finer scale or temporal evolution of land use in Amazonia might need to develop spatially consistent units of analysis based on the data presented here in order to reduce bias from differences across time and between countries in municipality (Table 4) and agricultural areas (Fig. 1). This can be achieved by either aggregating municipalities forward in time to keep common administrative boundaries of comparable areas (i.e. [Barona *et al.*, 2010]) or disaggregating census data based on land cover data from remote sensing sources [Leite *et al.*, 2012].

Anderson *et al.*, [2015] compared several existing approaches to downscale census (or similar) data sources to improve the spatial representation of the data and found discrepancies mainly due to methodological issues and choices of sources, such as remote sensing data, to

define cropland extent. Furthermore, many of these studies focused on understanding the drivers of deforestation and land use change dynamics within agricultural lands, requiring consistent definitions of natural versus planted pastures or rangelands which are difficult to distinguish from sparse forest areas [*Ramankutty et al.*, 2008; *Verburg et al.*, 2011] and whose definitions are not always detailed. Although, these categories are present in the database, there were not discussed here. Conclusions

We presented a harmonized database of agricultural censuses and surveys for Amazonia covering countries within Amazonia since 1950 at the municipality level. We described the spatial patterns of agricultural lands, crops and pastures distribution, annual to perennial cropping systems, planted to natural pastures, and main crop types. Significant correlations were found between these patterns and the fraction of crops and pasture lands. Our database should encourage improved studies on land use change dynamics, water and carbon cycles at regional and global scales.

## 7. Acknowledgements

We would like to thank Instituto Brasileiro de Geografia e Estatística (IBGE, Brazil), Instituto de Pesquisa Econômica Aplicada (IPEA, Brazil), Ministerio de Agricultura y Desarrollo Rural (MADR, Colombia), Instituto Geográfico Agustín Codazzi (IGAC, Colombia), Instituto Nacional de Estadística y Censos (INEC, Ecuador), Dirección de Información Cartográfica y Estadística (DICE, Ecuador), Instituto Geográfico Militar (IGN, Ecuador), Ministerio de Hacienda y Comercio (MHC, Peru), Instituto Geográfico Militar (IGM, Peru), Comisión Multisectorial para el Seguimiento y Evaluación del Plan de Desarrollo de la Sociedad de la Información del Perú (CODESI), Instituto Nacional de Estadística e Informática (INEI, Peru), Instituto Nacional de Estadística (INE, Bolivia), Instituto Geográfico Militar (IGM, Bolivia), Ministerio de Planeamiento y Coordinación (MPC, Bolivia), Unidad de Productividad y Competitividad (UPC, Bolivia), Ministeri van

Landbow-Suriname (Suriname) and Ministerio Popular para la Agricultura y Tierras (MAT, Venezuela) for providing documents, data, guidance on data use and contacts. Special thanks to the Institutional Library of the Instituto Nacional de Estadística e Informática (INEI, Peru).

We are particularly thankful to Mireya Isidro, Allan Guerrero, Claudia Bouroncle, Marcela Osorio, Andrea Tapia and Raúl García Palacios (from the Institutional Library at Instituto Nacional de Estadística e Informática in Peru) for helping with logistics on their countries.

Thanks to Paula Blanco for kindly providing land cover data for Latin America.

This work was financially supported by EU FP7 Amazalert (Raising the alert about feedbacks between climate and long term land use change in the Amazon) and GEOCARBON projects.

Also, has been partially financed by the CGIAR Research Program on Forestry, Trees and Agroforestry.

Finally Philippe Ciais acknowledges support from the ERC Syg P-Imbalance Grant.

## 8. Data access

Harmonized tabular and geographic information systems data are available upon request to the corresponding author and at [www.researchgate.com/linkwillbecreatedifpaperisaccepted](http://www.researchgate.com/linkwillbecreatedifpaperisaccepted).

## 9. References

Anderson, W., L. You, S. Wood, U. Wood-Sichra, and W. Wu (2015), An analysis of methodological and spatial differences in global cropping systems models and maps, *Glob. Ecol. Biogeogr.*, 24(2), 180–191, doi:10.1111/geb.12243.

Arima, E. Y., P. Richards, R. Walker, and M. M. Caldas (2011), Statistical confirmation of indirect land use change in the Brazilian Amazon, *Environ. Res. Lett.*, 6(2), 024010, doi:10.1088/1748-9326/6/2/024010.

Arvor, D., M. Meirelles, V. Dubreuil, A. Bégué, and Y. E. Shimabukuro (2012), Analyzing the agricultural transition in Mato Grosso, Brazil, using satellite-derived indices, *Appl. Geogr.*, 32(2), 702–713, doi:10.1016/j.apgeog.2011.08.007.

Baccini, A. et al. (2012), Estimated carbon dioxide emissions from tropical deforestation improved by carbon-density maps, *Nat. Clim. Chang.*, 2(3), 182–185,

doi:<http://www.nature.com/nclimate/journal/v2/n3/abs/nclimate1354.html#supplementary-information>.

Barona, E. (2009), Identifying the Role of Crop Production in Land Cover Change in Brazil , 1990-2006, McGill University.

Barona, E., N. Ramankutty, G. Hyman, and O. T. Coomes (2010), The role of pasture and soybean in deforestation of the Brazilian Amazon, *Environ. Res. Lett.*, 5(2), 024002, doi:10.1088/1748-9326/5/2/024002.

Barretto, A. G. O. P., G. Berndes, G. Sparovek, and S. Wirsenius (2013), Agricultural intensification in Brazil and its effects on land-use patterns: an analysis of the 1975-2006 period., *Glob. Chang. Biol.*, 19(6), 1804–15, doi:10.1111/gcb.12174.

Beltrán-Przekurat, A., R. a. Pielke Sr, J. L. Eastman, and M. B. Coughenour (2012), Modelling the effects of land-use/land-cover changes on the near-surface atmosphere in southern South America, *Int. J. Climatol.*, 32(8), 1206–1225, doi:10.1002/joc.2346.

Blanco, P. D. et al. (2013), A land cover map of Latin America and the Caribbean in the framework of the SERENA project, *Remote Sens. Environ.*, 132(0), 13–31, doi:<http://dx.doi.org/10.1016/j.rse.2012.12.025>.

Bonan, G. B. (2008), Forests and Climate Change: Forcings, Feedbacks, and the Climate Benefits of Forests, *Science (80-. )*, 320(5882), 1444–1449, doi:10.1126/science.1155121.

Cardille, J., and J. A. Foley (2003), Agricultural land-use change in Brazilian Amazônia between 1980 and 1995: Evidence from integrated satellite and census data, *Remote Sens. Environ.*, 87(4), 551–562, doi:10.1016/j.rse.2002.09.001.

Cardille, J. A., J. A. Foley, and M. H. Costa (2002), Characterizing patterns of agricultural land use in Amazonia by merging satellite classifications and census data, *Global Biogeochem. Cycles*, 16(3), 14–18, doi:10.1029/2000GB001386.

CIAT (2011), Amazon Initiative Map Server, *Div. Adm. Boliv. 2005*. Available from: <http://gismap.ciat.cgiar.org/IAViewer/> (Accessed 2 October 2013)

CODESI (Comisión Multisectorial para el Seguimiento y Evaluación del Plan de Desarrollo de la Sociedad de la Información en el Perú) (2011), La agenda Digital 2.0, *Div. Político Adm. Perú 2010*. Available from: <http://www.codesi.gob.pe/> (Accessed 2 October 2013)

Cowling, S. A., C. D. Jones, and P. M. Cox (2007), Consequences of the evolution of C4 photosynthesis for surface energy and water exchange, *J. Geophys. Res. Biogeosciences*, 112(G1), n/a–n/a, doi:10.1029/2005JG000095.

Cox, P. M., R. a Betts, C. D. Jones, S. a Spall, and I. J. Totterdell (2000), Acceleration of global warming due to carbon-cycle feedbacks in a coupled climate model., *Nature*, 408(6809), 184–7, doi:10.1038/35041539.

Cox, P. M., R. a Betts, M. Collins, P. P. Harris, C. Huntingford, and C. D. Jones (2004),

Amazonian forest dieback under climate-carbon cycle projections for the 21st century, *Theor. Appl. Climatol.*, 78(1-3), 137–156, doi:10.1007/s00704-004-0049-4.

DICE (Dirección de Información Cartográfica y Estadística-EC) (2012), División Político Administrativa de Ecuador 2012, Available from:

[http://www.inec.gob.ec/estadisticas/?option=com\\_content&view=article&id=80](http://www.inec.gob.ec/estadisticas/?option=com_content&view=article&id=80)

(Accessed 10 October 2013)

Dubreuil, V., N. Debortoli, B. Funatsu, V. Nédélec, and L. Durieux (2012), Impact of land-cover change in the Southern Amazonia climate: a case study for the region of Alta Floresta, Mato Grosso, Brazil, *Environ. Monit. Assess.*, 184(2), 877–891, doi:10.1007/s10661-011-2006-x.

De Espindola, G. M., A. P. D. de Aguiar, E. Pebesma, G. Câmara, and L. Fonseca (2012), Agricultural land use dynamics in the Brazilian Amazon based on remote sensing and census data, *Appl. Geogr.*, 32(2), 240–252, doi:10.1016/j.apgeog.2011.04.003.

GADM (2012), GADM database of Global Administrative Areas- Version 2.0, *Glob. Adm. Areas*.

Gibbs, H. K., M. Johnston, J. a Foley, T. Holloway, C. Monfreda, N. Ramankutty, and D. Zaks (2008), Carbon payback times for crop-based biofuel expansion in the tropics: the effects of changing yield and technology, *Environ. Res. Lett.*, 3(3), 034001, doi:10.1088/1748-9326/3/3/034001.

Houghton, R. A. (2010), How well do we know the flux of CO<sub>2</sub> from land-use change?, *Tellus B*, 62(5), 337–351, doi:10.1111/j.1600-0889.2010.00473.x.

IBGE (2011), Municípios, genealogia e alteração de nome e graf a, com indicação dos respectivos códigos, in *Evolução da divisão territorial do Brasil 1872-2010*, edited by Departamento de Geociencias, pp. 1–17, Instituto Brasileiro de Geografia e Estatística, Rio de Janeiro.

IBGE (Instituto Brasileiro de Geografia e Estatística) (1967a), *Censo Agrícola de 1960. Tomo I: Rondonia-Roraima-Amapá. 1ª Parte.*, Rio de Janeiro.

IBGE (Instituto Brasileiro de Geografia e Estatística) (1967b), *Censo Agrícola de 1960. Tomo II: Acre-Amazonas-Pará. 2ª Parte.*, Rio de Janeiro.

IBGE (Instituto Brasileiro de Geografia e Estatística) (1967c), *Censo Agrícola de 1960. Tomo III: Maranhao-Piauí. 2ª Parte.*, Rio de Janeiro.

IBGE (Instituto Brasileiro de Geografia e Estatística) (1967d), *Censo Agrícola de 1960. Tomo XIV: Mato Grosso-Goiás-Distrito Federal. 1ª Parte.*, Rio de Janeiro.

IBGE (Instituto Brasileiro de Geografia e Estatística) (2007), Mapas Interativos – Mapa de Divisões Territoriais, malhas municipais para os anos de 2005, 2001, 1997, 1994 e 1991.,

IBGE-SIDRA (2006), Banco de Datos Agregados - 2006, *Agric. Prod. Munic. Agric.*



*database SIDRA.*

IGAC-Gestión de Proyectos Geográficos y Cartográficos-Colombia (2011), Mapa Topográfico de la República de Colombia. Escala 1: 500 000. Año 2011,

IGM (Instituto Geográfico Militar- PE) (1970), Mapa Político y Físico de Perú. Escala 1: 2 500 000. Edición 1969-1970.,

IGM (Instituto Geográfico Militar-EC) (1975), Mapa del Ecuador - Escala 1: 1 000 000. Segunda Edición,

IGM (Instituto Geográfico Militar -BO) (1988), *Mapa de la República de Bolivia. Tercera Edición. Escala 1: 1 500 000*, La Paz.

IGM (Instituto Geográfico Militar-BO) (2005), *División político administrativa de Bolivia. Formato Shape file*, La Paz.

INE (Instituto Nacional de Estadística - BO), and MPC (Ministerio de Planeamiento y Coordinación - BO) (1989), *II Censo Agropecuario de Bolivia-Año 1984*, Primera Ed., edited by F. T. F. Soria Galvarro, La Paz.

INE (Instituto Nacional de Estadística - BO), MACA (Ministerio de Asuntos Campesinos y Agropecuarios -BO), and FAO (Organización de las Naciones Unidas para la Agricultura y la Alimentación) (1956), *I Censo Agropecuario de Bolivia- Año 1950*, edited by Fundación TIERRA, La Paz.

INEC (1976a), *II Censo Agropecuario 1974. Resultados Definitivos. Provincia Morona Santiago*, Primera Ed., edited by INEC, Instituto Nacional de Estadística y Censos de Ecuador, Quito.

INEC (1976b), *II Censo Agropecuario 1974. Resultados Definitivos. Provincia Napo*, Primera Ed., edited by INEC, Instituto Nacional de Estadística y Censos de Ecuador, Quito.

INEC (1976c), *II Censo Agropecuario 1974. Resultados Definitivos. Provincia Pastaza*, Primera Ed., edited by INEC, Instituto Nacional de Estadística y Censos de Ecuador, Quito.

INEC (1976d), *II Censo Agropecuario 1974. Resultados Definitivos. Provincia Zamora Chinchipe*, Primera Ed., edited by INEC, Instituto Nacional de Estadística y Censos de Ecuador, Quito.

INEC (Instituto Nacional de Estadística y Censos - EC), MAG (Ministerio de Agricultura y Ganadería- EC), and SICA (Sistema de la Integración Centroamericana) (2002), *III Censo Nacional Agropecuario de Ecuador*, Primera Ed., edited by Proyecto Servicio de Información y Censo Agropecuario; INEC, Quito.

INEI (Instituto Nacional de Estadística e Informática - PE) (2013), *IV CENSO NACIONAL AGROPECUARIO 2012, Sist. Consult. Datos. Version 1.0*. Available from: <http://censos.inei.gob.pe/Cenagro/redatam/> (Accessed 2 May 2014)

INEI (Instituto Nacional de Estadística e Informática-PE) (2002), III Censo Nacional Agropecuario de Perú - Año 1994, *Result. Censales*.

Ipea (Instituto de Pesquisa Econômica Aplicada-BR) (2012a), Ipeadata, *Datos Agropecu. Históricos a Niv. Munic. AMC70-00*. Available from: <http://www.ipeadata.gov.br/> (Accessed 7 June 2013)

Ipea (Instituto de Pesquisa Econômica Aplicada-BR) (2012b), Ipeadata, *Datos Agropecu. Históricos a Niv. Munic. año 1980*. Available from: <http://www.ipeadata.gov.br/> (Accessed 7 June 2013)

Lapola, D. M., R. Schaldach, J. Alcamo, A. Bondeau, J. Koch, C. Koelking, and J. a Priess (2010), Indirect land-use changes can overcome carbon savings from biofuels in Brazil., *Proc. Natl. Acad. Sci. U. S. A.*, *107*(8), 3388–93, doi:10.1073/pnas.0907318107.

Leff, B., N. Ramankutty, and J. A. Foley (2004), Geographic distribution of major crops across the world, *Global Biogeochem. Cycles*, *18*(1), n/a–n/a, doi:10.1029/2003GB002108.

Leite, C. C., M. H. Costa, B. S. Soares-Filho, and L. de Barros Viana Hissa (2012), Historical land use change and associated carbon emissions in Brazil from 1940 to 1995, *Global Biogeochem. Cycles*, *26*(2), GB2011, doi:10.1029/2011GB004133.

Loarie, S. R., D. B. Lobell, G. P. Asner, and C. B. Field (2010), Land-Cover and Surface Water Change Drive Large Albedo Increases in South America\*, *Earth Interact.*, *15*(7), 1–16, doi:10.1175/2010EI342.1.

Loarie, S. R., D. B. Lobell, G. P. Asner, Q. Mu, and C. B. Field (2011), Direct impacts on local climate of sugar-cane expansion in Brazil, *Nat. Clim. Chang.*, (April), 1–5, doi:10.1038/NCLIMATE1067.

Macedo, M. N., R. S. DeFries, D. C. Morton, C. M. Stickler, G. L. Galford, and Y. E. Shimabukuro (2012), Decoupling of deforestation and soy production in the southern Amazon during the late 2000s, *Proc. Natl. Acad. Sci.*, *109* (4), 1341–1346, doi:10.1073/pnas.1111374109.

MADR (Ministerio de Agricultura y Desarrollo Rural - CO), and IGAC (Subdirección de Geografía y Cartografía - CO) (2008), Agricultural database SIGOT, *Área Sembrada y Prod. Princ. Prod. Area sembrada Pastos Total y Cabezas Bov.*

MADR (Ministerio de Agricultura y Desarrollo Rural - CO), DANE (Departamento Administrativo Nacional de Estadística-CO), and SISAC (Sistema de información del Sector Agropecuario y Pesquero de Colombia) (1995), ENA (Encuesta Nacional Agropecuaria) 1995, *Superf. Total y Aprovech. la tierra*.

Makarieva, a. M., and V. G. Gorshkov (2007), Biotic pump of atmospheric moisture as driver of the hydrological cycle on land, *Hydrol. Earth Syst. Sci.*, *11*(2), 1013–1033, doi:10.5194/hess-11-1013-2007.

MAT (Ministerio del Poder Popular para la Agricultura y Tierras - VE) (2008), VII CENSO

AGRÍCOLA NACIONAL (MAYO 2007 / ABRIL 2008)- Base de datos Redatam+SP,  
Available from: <http://censo.mat.gob.ve/>

Meiyappan, P., and A. K. Jain (2012), Three distinct global estimates of historical land-cover change and land-use conversions for over 200 years, *Front. Earth Sci.*, 6(2), 122–139, doi:10.1007/s11707-012-0314-2.

MHC (Ministerio de Hacienda y Comercio- PE), and DNEC (Dirección Nacional de Estadística y Censos- PE) (1968a), *Censos Nacionales de Población, Vivienda y Agropecuario- 1961. Volumen I: Departamento de Amazonas*, Lima.

MHC (Ministerio de Hacienda y Comercio- PE), and DNEC (Dirección Nacional de Estadística y Censos- PE) (1968b), *Censos Nacionales de Población, Vivienda y Agropecuario- 1961. Volumen II: Departamento de Ancash*, Lima.

MHC (Ministerio de Hacienda y Comercio- PE), and DNEC (Dirección Nacional de Estadística y Censos- PE) (1968c), *Censos Nacionales de Población, Vivienda y Agropecuario- 1961. Volumen III: Departamento de Apurímac*, Lima.

MHC (Ministerio de Hacienda y Comercio- PE), and DNEC (Dirección Nacional de Estadística y Censos- PE) (1968d), *Censos Nacionales de Población, Vivienda y Agropecuario- 1961. Volumen IX: Departamento de Huanuco*, Lima.

MHC (Ministerio de Hacienda y Comercio- PE), and DNEC (Dirección Nacional de Estadística y Censos- PE) (1968e), *Censos Nacionales de Población, Vivienda y Agropecuario- 1961. Volumen V: Departamento de Ayacucho*, Lima.

MHC (Ministerio de Hacienda y Comercio- PE), and DNEC (Dirección Nacional de Estadística y Censos- PE) (1968f), *Censos Nacionales de Población, Vivienda y Agropecuario- 1961. Volumen VI: Departamento de Cajamarca*, Lima.

MHC (Ministerio de Hacienda y Comercio- PE), and DNEC (Dirección Nacional de Estadística y Censos- PE) (1968g), *Censos Nacionales de Población, Vivienda y Agropecuario- 1961. Volumen VII: Departamento de Cuzco*, Lima.

MHC (Ministerio de Hacienda y Comercio- PE), and DNEC (Dirección Nacional de Estadística y Censos- PE) (1968h), *Censos Nacionales de Población, Vivienda y Agropecuario- 1961. Volumen VIII: Departamento de Huancavélica*, Lima.

MHC (Ministerio de Hacienda y Comercio- PE), and DNEC (Dirección Nacional de Estadística y Censos- PE) (1968i), *Censos Nacionales de Población, Vivienda y Agropecuario- 1961. Volumen XI: Departamento de Junín*, Lima.

MHC (Ministerio de Hacienda y Comercio- PE), and DNEC (Dirección Nacional de Estadística y Censos- PE) (1968j), *Censos Nacionales de Población, Vivienda y Agropecuario- 1961. Volumen XII: Departamento de La Libertad*, Lima.

MHC (Ministerio de Hacienda y Comercio- PE), and DNEC (Dirección Nacional de Estadística y Censos- PE) (1968k), *Censos Nacionales de Población, Vivienda y Agropecuario- 1961. Volumen XIII: Departamento de Lambayeque*, Lima.

- MHC (Ministerio de Hacienda y Comercio- PE), and DNEC (Dirección Nacional de Estadística y Censos- PE) (1968l), *Censos Nacionales de Población, Vivienda y Agropecuario- 1961. Volumen XIV: Departamento de Loreto*, Lima.
- MHC (Ministerio de Hacienda y Comercio- PE), and DNEC (Dirección Nacional de Estadística y Censos- PE) (1968m), *Censos Nacionales de Población, Vivienda y Agropecuario- 1961. Volumen XIX: Departamento de Puno*, Lima.
- MHC (Ministerio de Hacienda y Comercio- PE), and DNEC (Dirección Nacional de Estadística y Censos- PE) (1968n), *Censos Nacionales de Población, Vivienda y Agropecuario- 1961. Volumen XV: Departamento de Madre de Dios*, Lima.
- MHC (Ministerio de Hacienda y Comercio- PE), and DNEC (Dirección Nacional de Estadística y Censos- PE) (1968o), *Censos Nacionales de Población, Vivienda y Agropecuario- 1961. Volumen XVIII: Departamento de Piura*, Lima.
- MHC (Ministerio de Hacienda y Comercio- PE), and DNEC (Dirección Nacional de Estadística y Censos- PE) (1968p), *Censos Nacionales de Población, Vivienda y Agropecuario- 1961. Volumen XX: Departamento de san Martín*, Lima.
- MHC (Ministerio de Hacienda y Comercio- PE), and DNEC (Dirección Nacional de Estadística y Censos- PE) (1978), *Censos Nacionales de Población, Vivienda y Agropecuario- 1961. Volumen XVII: Departamento de Pasco*, Lima.
- Ministerie van Landbouw-Suriname (2009), *Eindrapport van de Vijfde Landbouwtelling 2008-2009*, edited by edited by H. . S. Eerste edi., Agrarisch Informatie Systeem, Paramaribo.
- Monfreda, C., N. Ramankutty, and J. A. Foley (2008), Farming the planet: 2. Geographic distribution of crop areas, yields, physiological types, and net primary production in the year 2000, *Global Biogeochem. Cycles*, 22(1), n/a–n/a, doi:10.1029/2007GB002947.
- Morton, D. C., R. S. DeFries, Y. E. Shimabukuro, L. O. Anderson, E. Arai, F. del Bon Espirito-Santo, R. Freitas, and J. Morissette (2006), Cropland expansion changes deforestation dynamics in the southern Brazilian Amazon., *Proc. Natl. Acad. Sci. U. S. A.*, 103(39), 14637–41, doi:10.1073/pnas.0606377103.
- ONEC (Oficina Nacional de Estadística y Censos-PE) (1976a), *II Censo Nacional Agropecuario de Perú-Año 1972: Amazonas*, Primera ed., edited by Oficina Técnica de Difusión, ONEC, Lima.
- ONEC (Oficina Nacional de Estadística y Censos-PE) (1976b), *II Censo Nacional Agropecuario de Perú-Año 1972: Ancash*, Primera ed., edited by Oficina Técnica de Difusión, ONEC, Lima.
- ONEC (Oficina Nacional de Estadística y Censos-PE) (1976c), *II Censo Nacional Agropecuario de Perú-Año 1972: Apurimac*, Primera ed., edited by Oficina Técnica de Difusión, ONEC, Lima.
- ONEC (Oficina Nacional de Estadística y Censos-PE) (1976d), *II Censo Nacional*

*Agropecuario de Perú-Año 1972: Ayacucho*, Primera ed., edited by Oficina Técnica de Difusión, ONEC, Lima.

ONEC (Oficina Nacional de Estadística y Censos-PE) (1976e), *II Censo Nacional Agropecuario de Perú-Año 1972: Cajamarca*, Primera ed., edited by Oficina Técnica de Difusión, ONEC, Lima.

ONEC (Oficina Nacional de Estadística y Censos-PE) (1976f), *II Censo Nacional Agropecuario de Perú-Año 1972: Cuzco*, Primera ed., edited by Oficina Técnica de Difusión, ONEC, Lima.

ONEC (Oficina Nacional de Estadística y Censos-PE) (1976g), *II Censo Nacional Agropecuario de Perú-Año 1972: Huacavelica*, Primera ed., edited by Oficina Técnica de Difusión, ONEC, Lima.

ONEC (Oficina Nacional de Estadística y Censos-PE) (1976h), *II Censo Nacional Agropecuario de Perú-Año 1972: Huanuco*, Primera ed., edited by Oficina Técnica de Difusión, ONEC, Lima.

ONEC (Oficina Nacional de Estadística y Censos-PE) (1976i), *II Censo Nacional Agropecuario de Perú-Año 1972: Junin*, Primera ed., edited by Oficina Técnica de Difusión, ONEC, Lima.

ONEC (Oficina Nacional de Estadística y Censos-PE) (1976j), *II Censo Nacional Agropecuario de Perú-Año 1972: La Libertad*, Primera ed., edited by Oficina Técnica de Difusión, ONEC, Lima.

ONEC (Oficina Nacional de Estadística y Censos-PE) (1976k), *II Censo Nacional Agropecuario de Perú-Año 1972: Lambayeque*, Primera ed., edited by Oficina Técnica de Difusión, ONEC, Lima.

ONEC (Oficina Nacional de Estadística y Censos-PE) (1976l), *II Censo Nacional Agropecuario de Perú-Año 1972: Loreto*, Primera ed., edited by Oficina Técnica de Difusión, ONEC, Lima.

ONEC (Oficina Nacional de Estadística y Censos-PE) (1976m), *II Censo Nacional Agropecuario de Perú-Año 1972: Madre de Dios*, Primera ed., edited by Oficina Técnica de Difusión, ONEC, Lima.

ONEC (Oficina Nacional de Estadística y Censos-PE) (1976n), *II Censo Nacional Agropecuario de Perú-Año 1972: Pasco*, Primera ed., edited by Oficina Técnica de Difusión, ONEC, Lima.

ONEC (Oficina Nacional de Estadística y Censos-PE) (1976o), *II Censo Nacional Agropecuario de Perú-Año 1972: Piura*, Primera ed., edited by Oficina Técnica de Difusión, ONEC, Lima.

ONEC (Oficina Nacional de Estadística y Censos-PE) (1976p), *II Censo Nacional Agropecuario de Perú-Año 1972: Puno*, Primera ed., edited by Oficina Técnica de Difusión, ONEC, Lima.

ONEC (Oficina Nacional de Estadística y Censos-PE) (1976q), *II Censo Nacional Agropecuario de Perú-Año 1972: San Martín*, Primera ed., edited by Oficina Técnica de Difusión, ONEC, Lima.

Le Page, Y., G. R. van der Werf, D. C. Morton, and J. M. C. Pereira (2010), Modeling fire-driven deforestation potential in Amazonia under current and projected climate conditions, *J. Geophys. Res.*, *115*(G3), 1–11, doi:10.1029/2009JG001190.

Pires, G. F., and M. H. Costa (2013), Deforestation causes different subregional effects on the Amazon bioclimatic equilibrium, *Geophys. Res. Lett.*, *40*(14), 3618–3623, doi:10.1002/grl.50570.

Pitman, A. J. et al. (2009), Uncertainties in climate responses to past land cover change: First results from the LUCID intercomparison study, *Geophys. Res. Lett.*, *36*, doi:10.1029/2009GL039076.

Ramankutty, N., A. T. Evan, C. Monfreda, and J. A. Foley (2008), Farming the planet: 1. Geographic distribution of global agricultural lands in the year 2000, *Global Biogeochem. Cycles*, *22*(1), GB1003, doi:10.1029/2007GB002952.

Reis, E., M. Pimentel, A. I. Alvarenga, and M. do C. Horácio dos Santos (2011), Áreas mínimas comparáveis para os períodos intercensitários de 1872 a 2000, in *Simpósio Brasileiro de Cartografia Histórica*, pp. 1–19, Paraty.

Rudorff, B. F. T., M. Adami, D. A. Aguiar, M. A. Moreira, M. P. Mello, L. Fabiani, D. F. Amaral, and B. M. Pires (2011), The Soy Moratorium in the Amazon Biome Monitored by Remote Sensing Images, *Remote Sens.*, *3*(1), 185–202, doi:10.3390/rs3010185.

Simon, M., G. Fragomeni, and L. Fernando (2005), The expansion of agriculture in the Brazilian Amazon, *Environ. Conserv.*, *null*(03), 203–212, doi:10.1017/S0376892905002201.

Soares-Filho, B. S., D. C. Nepstad, L. M. Curran, G. C. Cerqueira, R. A. Garcia, C. A. Ramos, E. Voll, A. McDonald, P. Lefebvre, and P. Schlesinger (2006), Modelling conservation in the Amazon basin., *Nature*, *440*(7083), 520–3, doi:10.1038/nature04389.

Soler, L. de S., M. I. S. Escada, and P. H. Verburg (2009), Quantifying deforestation and secondary forest determinants for different spatial extents in an Amazonian colonization frontier (Rondonia), *Appl. Geogr.*, *29*(2), 182–193, doi:10.1016/j.apgeog.2008.09.005.

Sterling, S., and A. Ducharne (2008), Comprehensive data set of global land cover change for land surface model applications, *Global Biogeochem. Cycles*, *22*(3), n/a–n/a, doi:10.1029/2007GB002959.

Still, C. J., J. A. Berry, G. J. Collatz, and R. S. DeFries (2003), Global distribution of C3 and C4 vegetation: Carbon cycle implications, *Global Biogeochem. Cycles*, *17*(1), 6–14, doi:10.1029/2001GB001807.

UPC (Unidad de Productividad y Competitividad-BO) (2010), *Información Productiva*

Municipal,

Verburg, P. H., K. Neumann, and L. Nol (2011), Challenges in using land use and land cover data for global change studies, *Glob. Chang. Biol.*, 17(2), 974–989, doi:10.1111/j.1365-2486.2010.02307.x.

Wunder, S. (1999), *Value determinants of plant extractivism in Brazil*, Rio de Janeiro, Brazil.

Accepted Article

Table 1. Land cover distribution by country in Amazonia for 2008 [Blanco *et al.*, 2013]. Country fractions indicate country shares of the study area. Land cover areas are presented as fraction of each class total area (columns) and as fractions of the study area (two bottom rows).

Country	Country (%)	Forest (%)	Agriculture (%)	Other (%)*
Brazil	66.1	64.4	73.4	75.1
Bolivia	8.2	7.6	11.2	7.7
Peru	11.2	11.0	12.9	9.2
Ecuador	1.8	1.6	0.5	0.5
Colombia	5.2	6.2	0.5	3.0
Venezuela	2.3	2.7	0.3	0.8
Guyana	2.6	3.0	1.0	1.8
Suriname	1.9	2.3	0.1	1.5
French Guyana	1.1	1.4	0.1	0.3
Total (%)	100.0	80.9	16.4	2.6
Total (hax10 <sup>3</sup> )	864274	699549	142203	22520

(\*) Infrastructure, water bodies, salt marshes

Accepted Article



Table 2. Time chart of agricultural census data collected for this study. When no data was available, the corresponding year is not shown as a line in the table.

Decade	Year	BO	BR	CO	PE	EC	VE	SU
1950	1950	■						
1960	1960		■					
	1961				■			
1970	1972				■			
	1974					■		
	1975		■					
1980	1980		■					
	1984	■						
1990	1994				■			
	1995		■	■				
2000	2000		■			■		
	2005	■		■				
	2006		■					
	2008						■	
	2009							■
2010	2012				■			

\* BO: Bolivia, BR: Brazil, CO: Colombia, PE: Peru, EC: Ecuador, VE: Venezuela, SU:

Suriname

Accepted

Table 3. Data sources for agricultural data and administrative unit maps and summary of methods used to harmonize the datasets. Methods used are: (1) census data digitized from hardcover format, (2) census data collected from digital sources, (3) scanned maps were used as a reference to reconstruct administrative boundaries based on original digital vector sources, (4) administrative units for Brazil in 1980 were reconstructed from a table indicating the evolution in time of municipalities boundaries (based on creation date, actual and corresponding previous municipality for any date in which dis/aggregation of units occurred), (5) data from other sources, and (6) official available vector data.

Country	Year	Agricultural census Source	Method	Administrative map Source	Method	Administrative level/name
Brazil	1960	[IBGE ( <i>Instituto Brasileiro de Geografia e Estatística</i> ), 1967a, 1967b, 1967c, 1967d]	1	[Reis et al., 2011], [IBGE ( <i>Instituto Brasileiro de Geografia e Estatística</i> ), 2007]	5	3/ Municipality
	1975	[Ipea ( <i>Instituto de Pesquisa Econômica Aplicada-BR</i> ), 2012a]	2	[Reis et al., 2011], [IBGE ( <i>Instituto Brasileiro de Geografia e Estatística</i> ), 2007]	5	3/ Municipality
	1980	[Ipea ( <i>Instituto de Pesquisa Econômica Aplicada-BR</i> ), 2012b]	2	[IBGE, 2011], [IBGE ( <i>Instituto Brasileiro de Geografia e Estatística</i> ), 2007]	4	3/ Municipality
	1995	[IBGE-SIDRA, 2006]	2	[Barona, 2009]	5	3/ Municipality
	2000	[IBGE-SIDRA, 2006]	2	[Barona, 2009]	5	3/ Municipality
	2006	[IBGE-SIDRA, 2006]	2	[Barona, 2009]	5	3/ Municipality
Colombia	1995	[MADR ( <i>Ministerio de Agricultura y Desarrollo Rural - CO</i> ) et al., 1995],	2	[IGAC- <i>Gestión de Proyectos Geográficos y Cartográficos-Colombia</i> , 2011]	6	2/ Department
	2008	[MADR ( <i>Ministerio de Agricultura y Desarrollo Rural -</i>	2	[IGAC- <i>Gestión de Proyectos Geográficos y</i>	6	2/ Department

Ecuador	197 4	<i>CO) and IGAC (Subdirección de Geografía y Cartografía - CO), 2008]</i> [INEC, 1976a, 1976b, 1976c, 1976d]	1	<i>Cartográficos-Colombia, 2011]</i> [IGM (Instituto Geográfico Militar-EC), 1975; DICE (Dirección de Información Cartográfica y Estadística-EC), 2012]	3	2/ Province
	200 0	[INEC (Instituto Nacional de Estadística y Censos - EC) et al., 2002]	2	[DICE (Dirección de Información Cartográfica y Estadística-EC), 2012]	6	2/ Province
Peru	196 1	[MHC (Ministerio de Hacienda y Comercio-PE) and DNEC (Dirección Nacional de Estadística y Censos- PE), 1968a, 1968b, 1968k, 1968l, 1968m, 1968n, 1968o, 1968p, 1978, 1968c, 1968d, 1968e, 1968f, 1968g, 1968h, 1968i, 1968j]	1	[IGM (Instituto Geográfico Militar-PE), 1970], [CODESI (Comisión Multisectorial para el Seguimiento y Evaluación del Plan de Desarrollo de la Sociedad de la Información en el Perú), 2011]	3	3/Province
	197 2	[ONEC (Oficina Nacional de Estadística y Censos-PE), 1976a, 1976b, 1976k, 1976l, 1976m, 1976n, 1976o, 1976p, 1976q, 1976c, 1976d, 1976e, 1976f, 1976g, 1976h, 1976i, 1976j]	1	[IGM (Instituto Geográfico Militar-PE), 1970; CODESI (Comisión Multisectorial para el Seguimiento y Evaluación del Plan de Desarrollo de la Sociedad de la Información en el Perú), 2011], CODESI 2011	3	3/Province
	199 4	[INEI (Instituto Nacional de Estadística e Informática-PE), 2002]	2	[INEI (Instituto Nacional de Estadística e Informática-PE), 2002; CODESI (Comisión Multisectorial para el Seguimiento y Evaluación del Plan de Desarrollo de la Sociedad de la Información en el Perú), 2011],	6	3/Province

	201 2	[INEI ( <i>Instituto Nacional de Estadística e Informática - PE</i> ), 2013]	2	CODESI 2011 [INEI ( <i>Instituto Nacional de Estadística e Informática-PE</i> ), 2002; CODESI ( <i>Comisión Multisectorial para el Seguimiento y Evaluación del Plan de Desarrollo de la Sociedad de la Información en el Perú</i> ), 2011]	6	3/Province
Bolivia	195 0	[INE ( <i>Instituto Nacional de Estadística - BO</i> ) et al., 1956]	2	[INE ( <i>Instituto Nacional de Estadística - BO</i> ) et al., 1956; IGM ( <i>Instituto Geográfico Militar - BO</i> ), 1988; CIAT, 2011]	3	3/Province
	198 0	[INE ( <i>Instituto Nacional de Estadística - BO</i> ) and MPC ( <i>Ministerio de Planeamiento y Coordinación - BO</i> ), 1989]	2	[IGM ( <i>Instituto Geográfico Militar - BO</i> ), 1988; INE ( <i>Instituto Nacional de Estadística - BO</i> ) and MPC ( <i>Ministerio de Planeamiento y Coordinación - BO</i> ), 1989; CIAT, 2011]	3	3/Province
	200 5	[UPC ( <i>Unidad de Productividad y Competitividad-BO</i> ), 2010]	2	[IGM ( <i>Instituto Geográfico Militar-BO</i> ), 2005; CIAT, 2011]	6	3/Province
Suriname	200 9	[ <i>Ministerie van Landbouw-Suriname</i> , 2009]	2	[GADM, 2012]	5	2/District
Venezuela	200 8	[MAT ( <i>Ministerio del Poder Popular para la Agricultura y Tierras - VE</i> ), 2008]	2	[GADM, 2012]	5	3/ Municipality

Table 4. Number, maximum and minimum size of administrative units per agricultural census used in this study.

Country	Year	Administrative Units			
		Number	Size (10 <sup>3</sup> km <sup>2</sup> )		
			Mean	Largest	Smallest
Bolivia	1950	58	13.72	88.04	0.21
	1984	60	13.26	88.04	0.21
	2005	63	12.63	88.04	0.21
Brazil	1960	189	30.11	633.64	0.44
	1975	283	20.11	408.33	0.19
	1980	377	15.04	186.72	0.19
	1995, 2000, 2005	463	12.29	200.25	0.23
Colombia	1995	7	70.20	109.26	25.90
	2008	7	70.20	109.26	25.90
Ecuador	1974	4	29.09	51.91	10.62
	2000	6	19.40	29.88	10.61
Peru	1961	84	11.63	159.68	0.53
	1972	87	11.24	159.68	0.53
	1994	106	9.05	121.71	0.53
	2012	110	8.72	121.71	0.53
Suriname	2009	10	16.39	126.53	0.19
Venezuela	2008	4	46.91	70.43	19.00

Table 5. Spearman correlation coefficients ( $\rho$ ), number of observations (n), and p-values between fraction of agricultural lands per municipality and crops and pastures ration (CPR), perennial and annual crops ratio (PAR) and, C4-C3 photosynthetic pathway ratio (C4C3).

(Bold numbers denote significant statistical values)

	CPR			PAR			C4C3			PNP		
	n	$\rho$	p	n	$\rho$	p	n	$\rho$	p	n	$\rho$	p
All country-years	27	-	<0,00	27	-	<0,00	27	0,2	<0,00	22	0.0	0.441
	50	0,4	01	43	0,3	01	33	0	01	34	2	2
		3			1							
Bolivia	10	-	0,006	10	-	0,446	10	0,0	0,474	51	-	0.867
	9	0,2	5	7	0,0	5	7	7	0		0.0	9
		6			7						2	
Brazil	22	-	<0,00	22	-	<0,00	22	0,2	<0,00	17	0.2	<0.00
	37	0,4	01	37	0,3	01	37	0	01	74	0	01
		2			7							
Colombia	14	-	0,337	7	-	0,080	7	-	0,335	7	-	0.599
		0,2	6		0,7	2		0,3	9		0.2	7
		7			1			9			1	
Ecuador	10	-	0,237	10	-	0,623	10	0,1	0,675	10	-	0.898
		0,3	3		0,1	5		4	8		0.0	7
		9			6						4	
Peru	36	-	<0,00	36	-	<0,00	36	0,2	<0,00	37	-	<0.00
	8	0,7	01	8	0,6	01	8	5	01	9	0.6	01
		3			4						9	
Suriname	10	-	0,047	nd	nd	nd	nd	nd	nd	9	0.4	0.220
		0,6	5								3	3
		6										
Venezuela	4	-	0,165	4	-	0,165	4	0,2	0,729	4	-	0.165
		0,8	9		0,8	9		0	0		0.8	9
		0			0						0	
Bolivia - 1950	58	0,1		58	-	0,000	58	0,0	0,851	nd	nd	nd
		1	0,400		0,4	2		2	3			
			9		9							
Bolivia - 1984	51	-		49	0,2	0,057	49	0,2	0,152	51	-	0.867
		0,3	0,015		7	1		1	9		0.0	9
		4	7								2	
Bolivia - 2005	nd	nd	nd	nd	nd	nd	nd	nd	nd	nd	nd	nd
Brazil - 1960	18	-	<0,00	18	-	0,020	18	0,3	<0,00	18	-	<0.00
	8	0,4	01	8	0,1	4	8	1	01	8	0.4	01
		7			7						8	
Brazil - 1975	28	-	<0,00	28	-	<0,00	28	0,1	0,003	28	-	0.906
	3	0,4	01	3	0,4	01	3	8	0	3	0.0	3
		6			7						1	
Brazil - 1980	37	-	<0,00	37	-	<0,00	37	-	<0,00	37	-	0.063
	7	0,3	01	7	0,4	01	7	0,2	01	7	0.1	2
		0			7			6			0	
Brazil -	46	-	<0,00	46	-	<0,00	46	0,3	<0,00	46	0.2	<0.00

1995	3	0,3 5	01	3	0,4 5	01	3	2	01	3	8	01
Brazil - 2000	46 3	- 0,4 9	<0,00 01	46 3	- 0,3 9	<0,00 01	46 3	0,3 5	<0,00 01	nd	nd	nd
Brazil - 2006	46 3	- 0,4 1	<0,00 01	46 3	- 0,3 8	<0,00 01	46 3	0,2 7	<0,00 01	46 3	0,3 4	<0,00 01
Colombia - 1995	7	0,2 5	0,540 3	nd	nd	nd	nd	nd	nd	7	- 0,2 1	0,599 7
Colombia - 2008	7	- 0,7 9	0,054 3	7	- 0,7 1	0,080 2	7	- 0,3 9	0,335 9	nd	nd	nd
Ecuador - 1974	4	- 0,6 0	0,298 7	4	- 0,6 0	0,298 7	4	0,6 0	0,298 7	4	- 0,4 0	0,488 4
Ecuador - 2000	6	- 0,6 6	0,141 7	6	- 0,2 6	0,565 3	6	0,1 4	0,749 4	6	0,2 0	0,654 7
Peru - 1961	74	- 0,7 0	<0,00 01	74	- 0,5 6	<0,00 01	74	0,2 1	0,077 7	84	- 0,7 7	<0,00 01
Peru - 1972	80	- 0,6 4	<0,00 01	80	- 0,5 6	<0,00 01	80	0,3 2	0,005 1	80	- 0,6 0	<0,00 01
Peru - 1994	10 5	- 0,7 8	<0,00 01	10 5	- 0,7 5	<0,00 01	10 5	0,1 9	0,050 0	10 6	- 0,8 1	<0,00 01
Peru - 2012	10 9	- 0,7 7	<0,00 01	10 9	- 0,6 7	<0,00 01	10 9	0,2 7	0,004 7	10 9	- 0,5 8	<0,00 01
Suriname - 2009	10	- 0,6 6	0,047 5	nd	nd	nd	nd	nd	nd	9	0,4 3	0,220 3
Venezuela - 2008	4	- 0,8 0	0,165 9	4	0,8 0	0,165 9	4	0,8 0	0,165 9	4	- 0,8 0	0,165 9

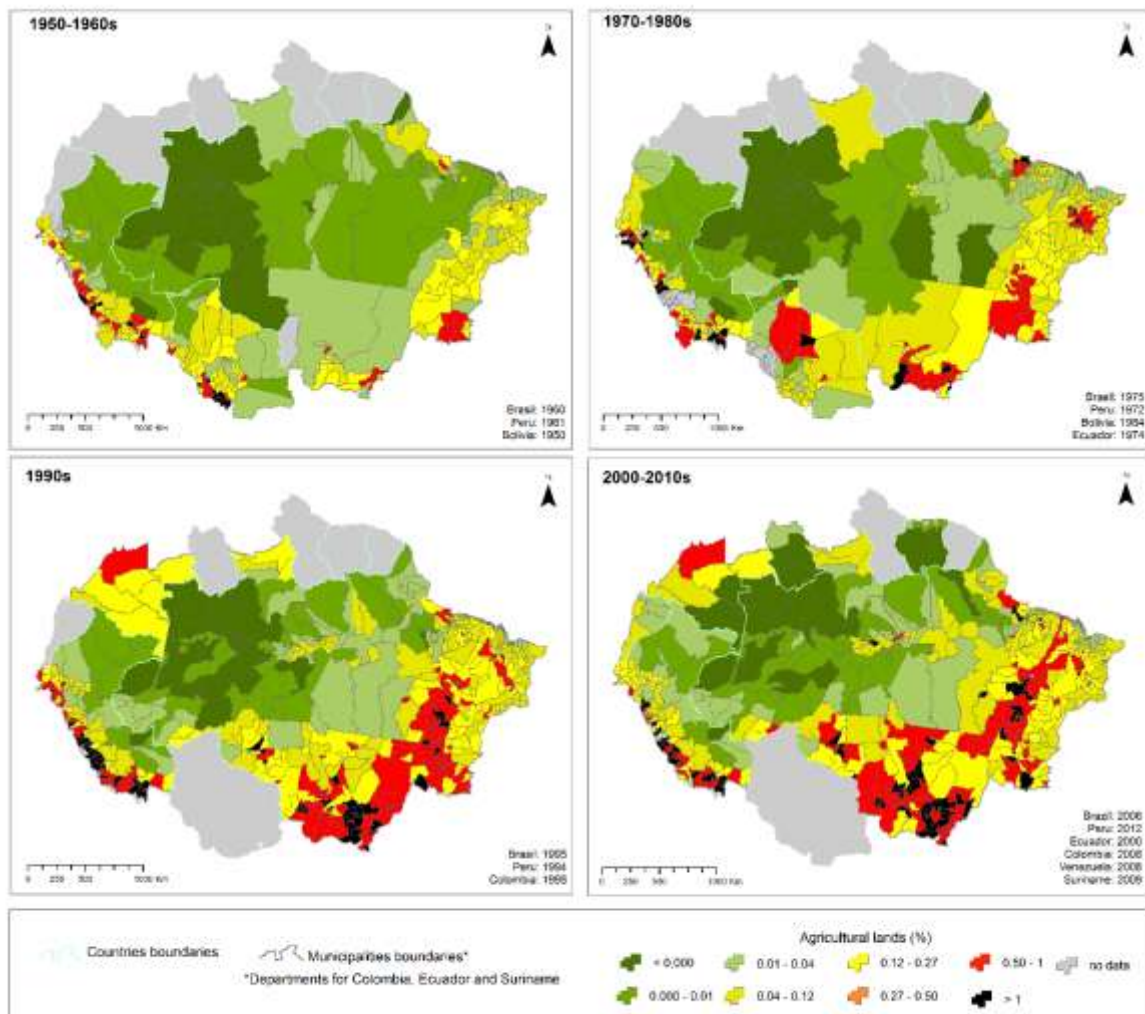
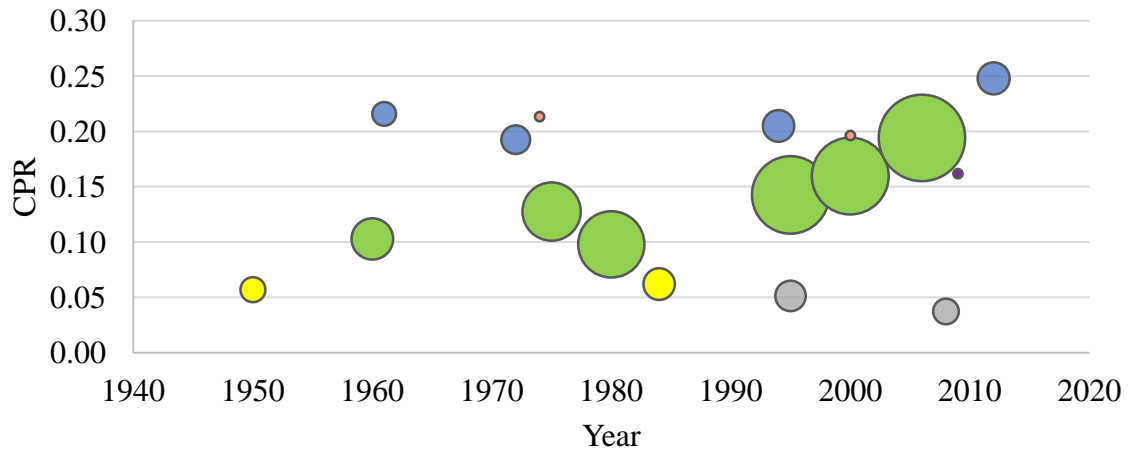


Figure 1. Fraction of agricultural lands in each administrative unit across groups of two consecutive decades in Amazonia. Specific census dates used for the map are indicated for each period.





● Bolivia ● Brazil ● Colombia ● Ecuador ● Peru ● Suriname

Figure 2. Crop-to-pastures ratio for countries within the Amazon basin. The area of each bubble shows the fraction of agricultural lands in each country of the Amazon basin. Ecuador and Suriname are shown oversized (multiplied by 2.5 and 15 respectively) since they have <1% of the total Amazon share while the largest value refers to Brazil 2006 with 8.68%). Venezuela 2008, not shown, has a CPR of 1.16 and 0.004% of the Amazonian agricultural lands.

Accepted

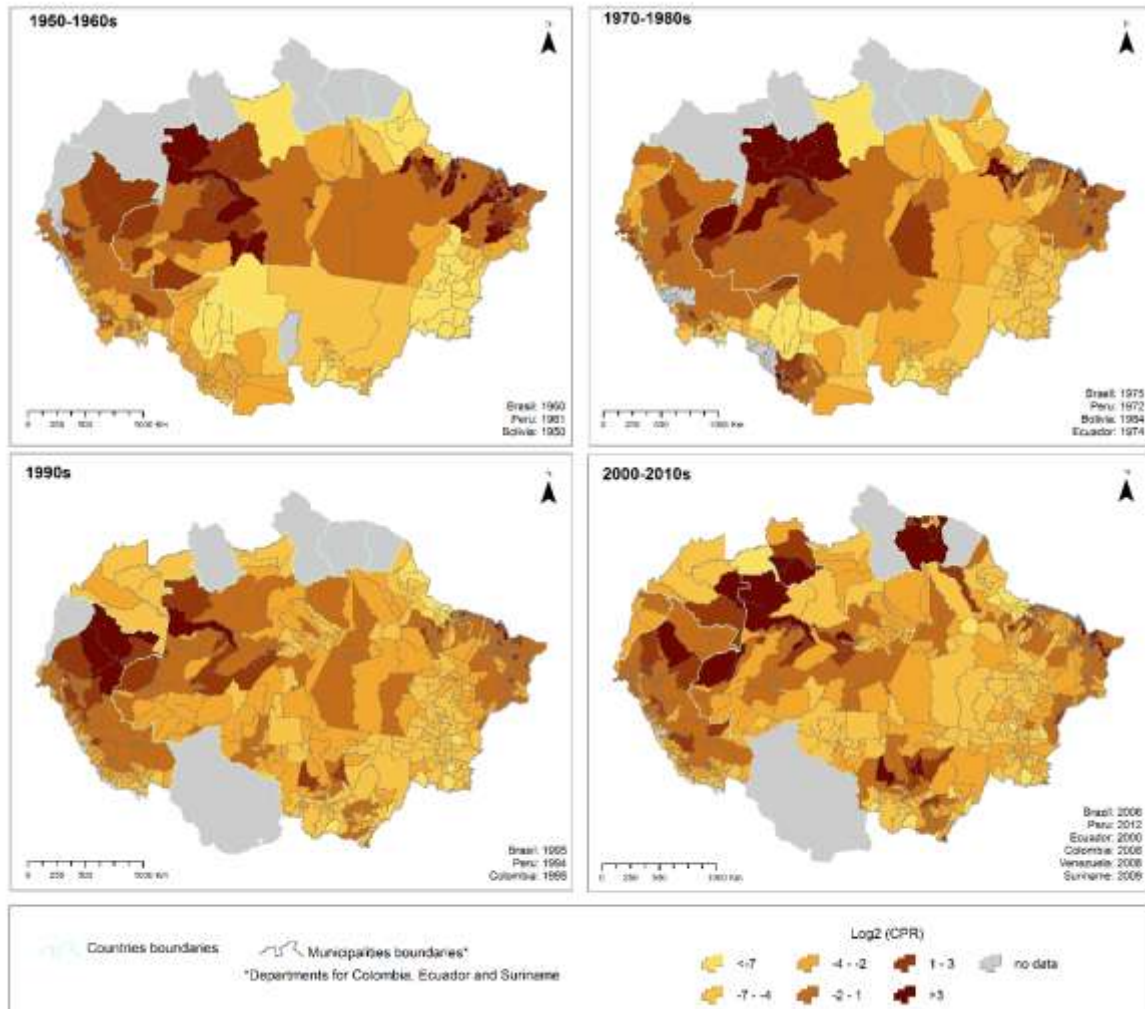


Figure 3. Fraction of agricultural lands in each administrative unit (color of each unit) and its crops/pastures ratio (CPR) (size of the dots in each unit) across groups of two consecutive decades in Amazonia. Specific census dates used for the map are indicated for each period.

Accepted

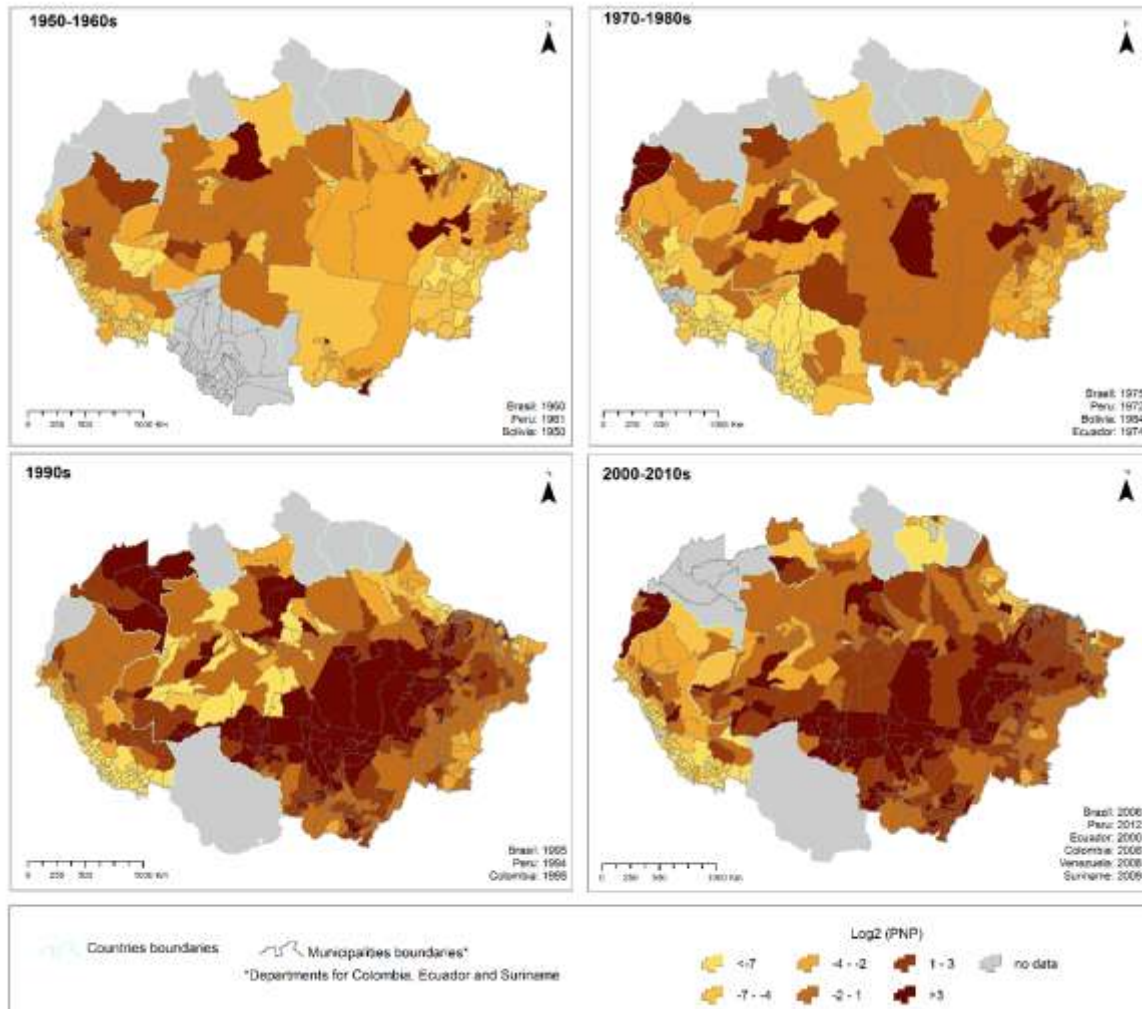


Figure 4. Fraction of pasture lands in each administrative unit (color of each unit) and its planted/natural ratio (PNP) (size of the dots in each unit) across groups of two consecutive decades in Amazonia. Specific census dates used for the map are indicated for each period.

Accepted

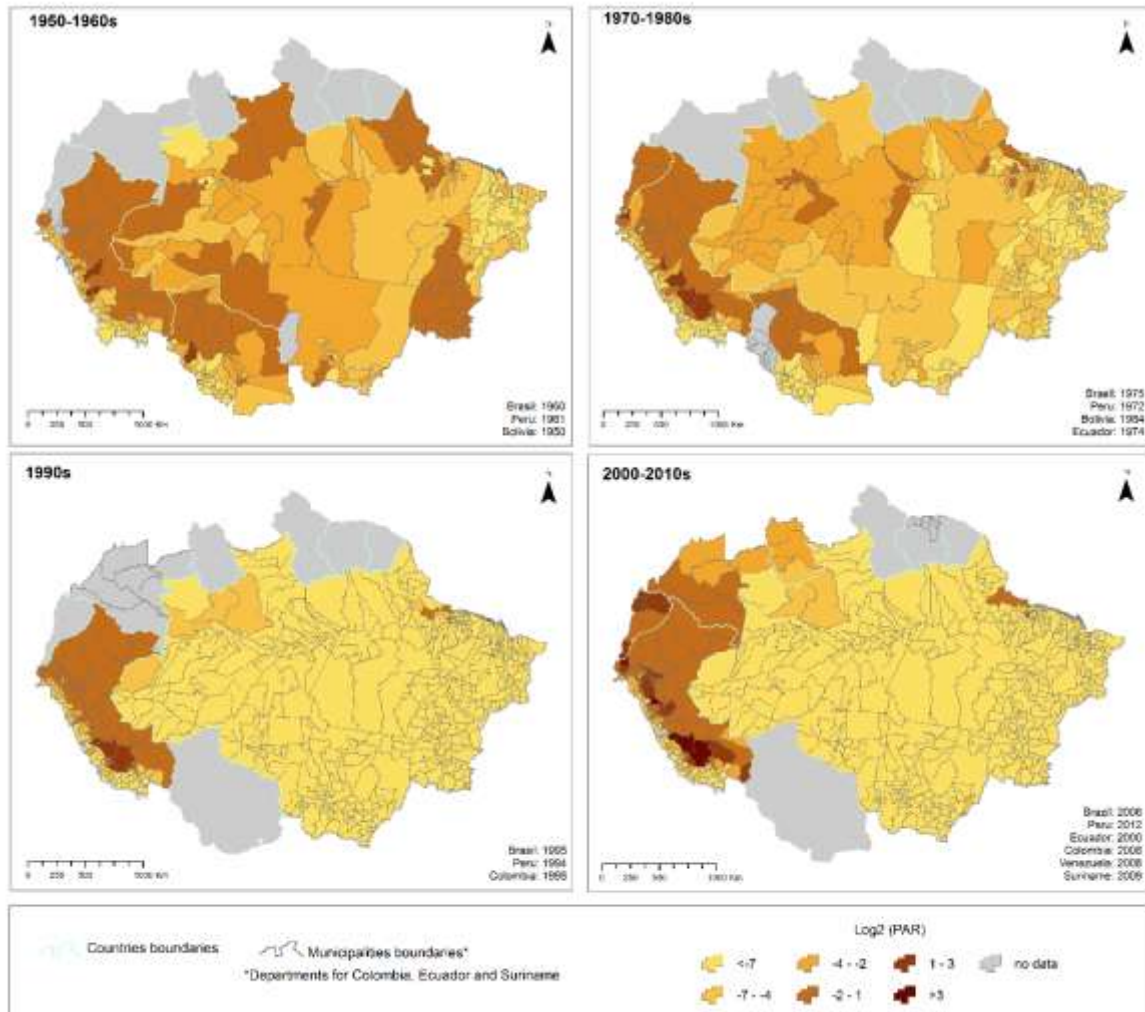


Figure 5. Fraction of agricultural lands for each administrative unit and its ratio of perennial/annual crops ( $\text{Log}_2(\text{PAR})$ ) across decades in Amazonia. Specific census dates used for the map are indicated for each period.

Accepted

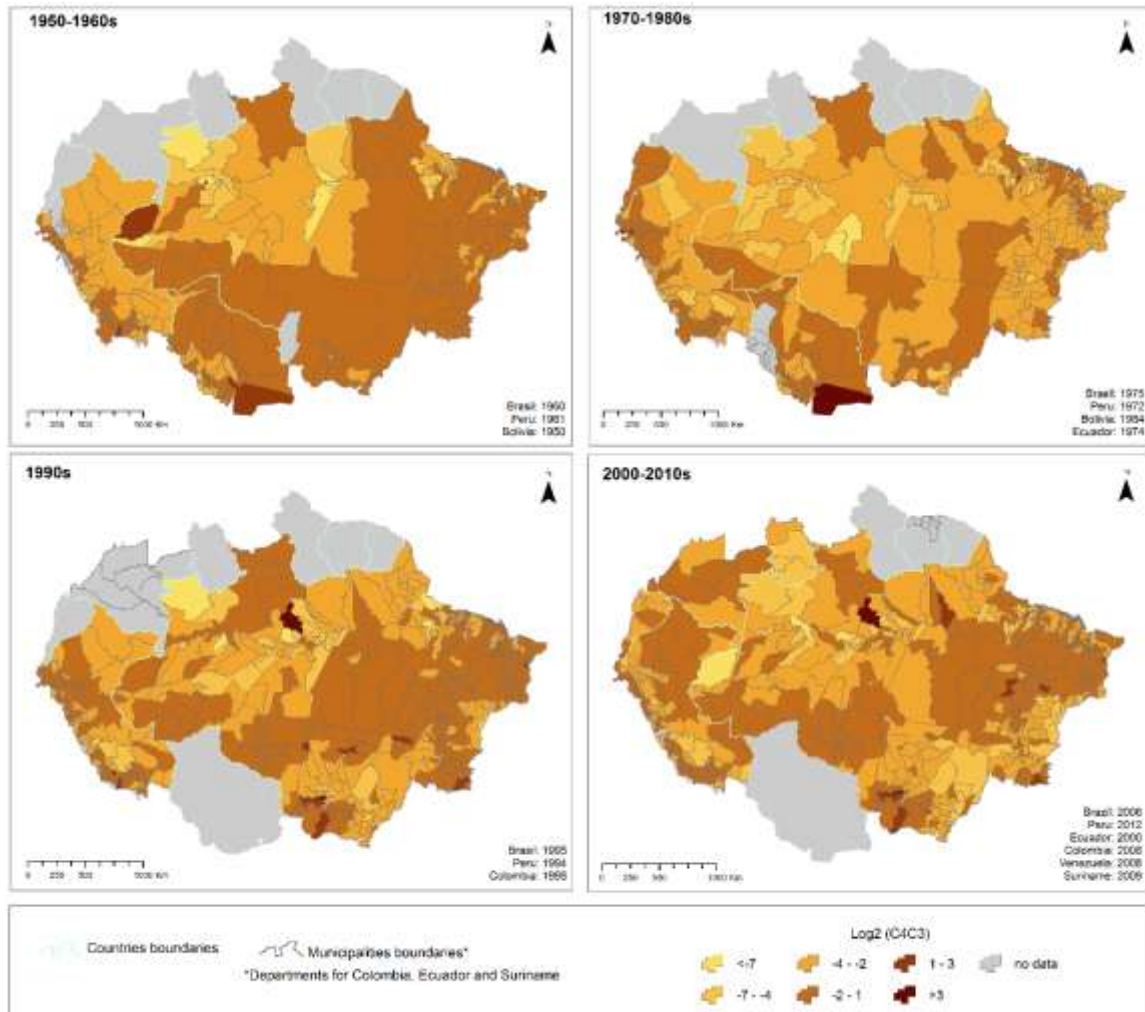


Figure 6. Fraction of agricultural land in each administrative unit, and the ratio of C4 to C3 cropland area (C4C3R) in each municipality across groups of decades. Specific census dates grouped for each map are indicated for each period.

Accepted

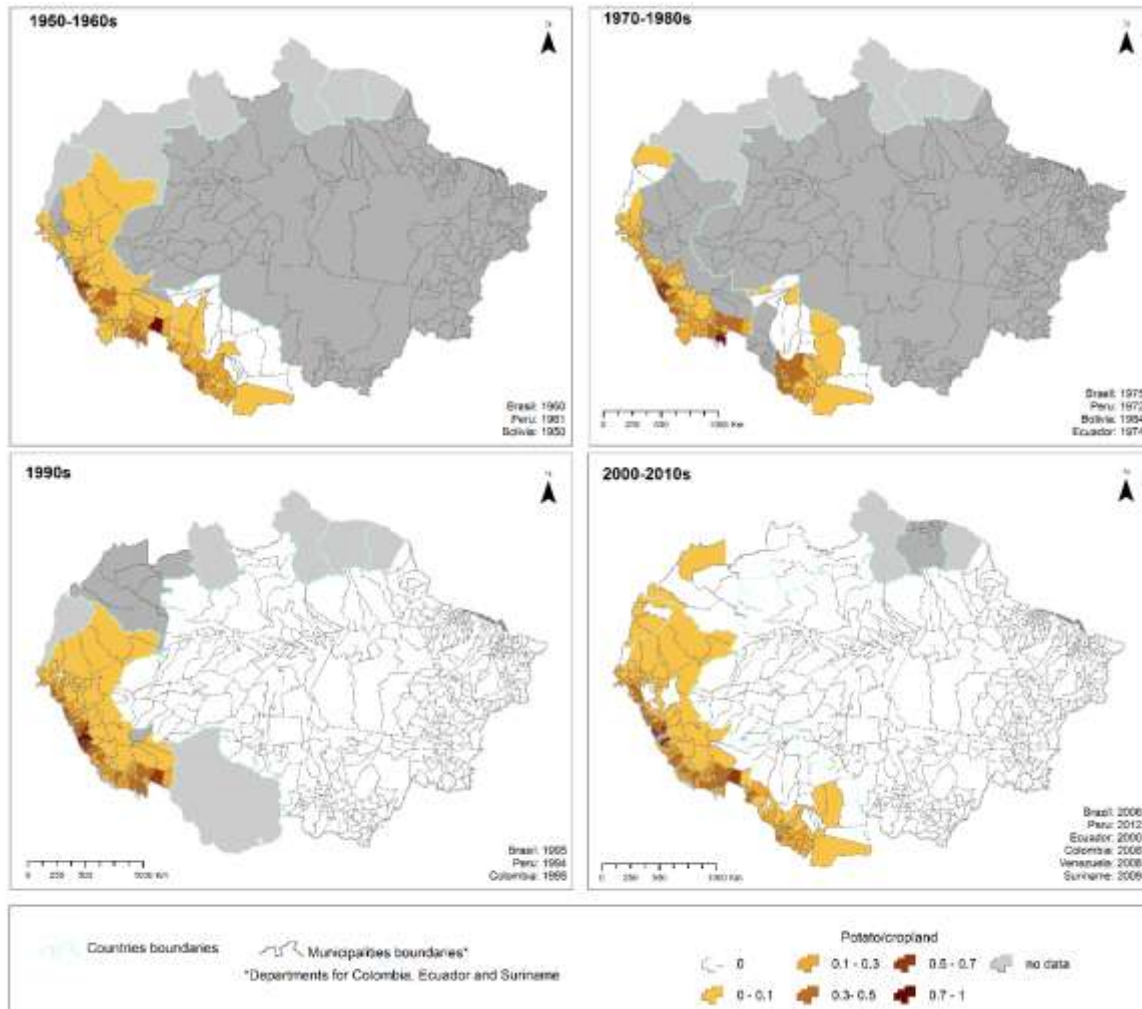


Figure 7. Fraction of potato among total croplands (not including pasture lands) for each administrative unit and fraction of total agricultural lands (crops and pastures) per municipality. Specific census dates used for the map are indicated for each period.

Accepted

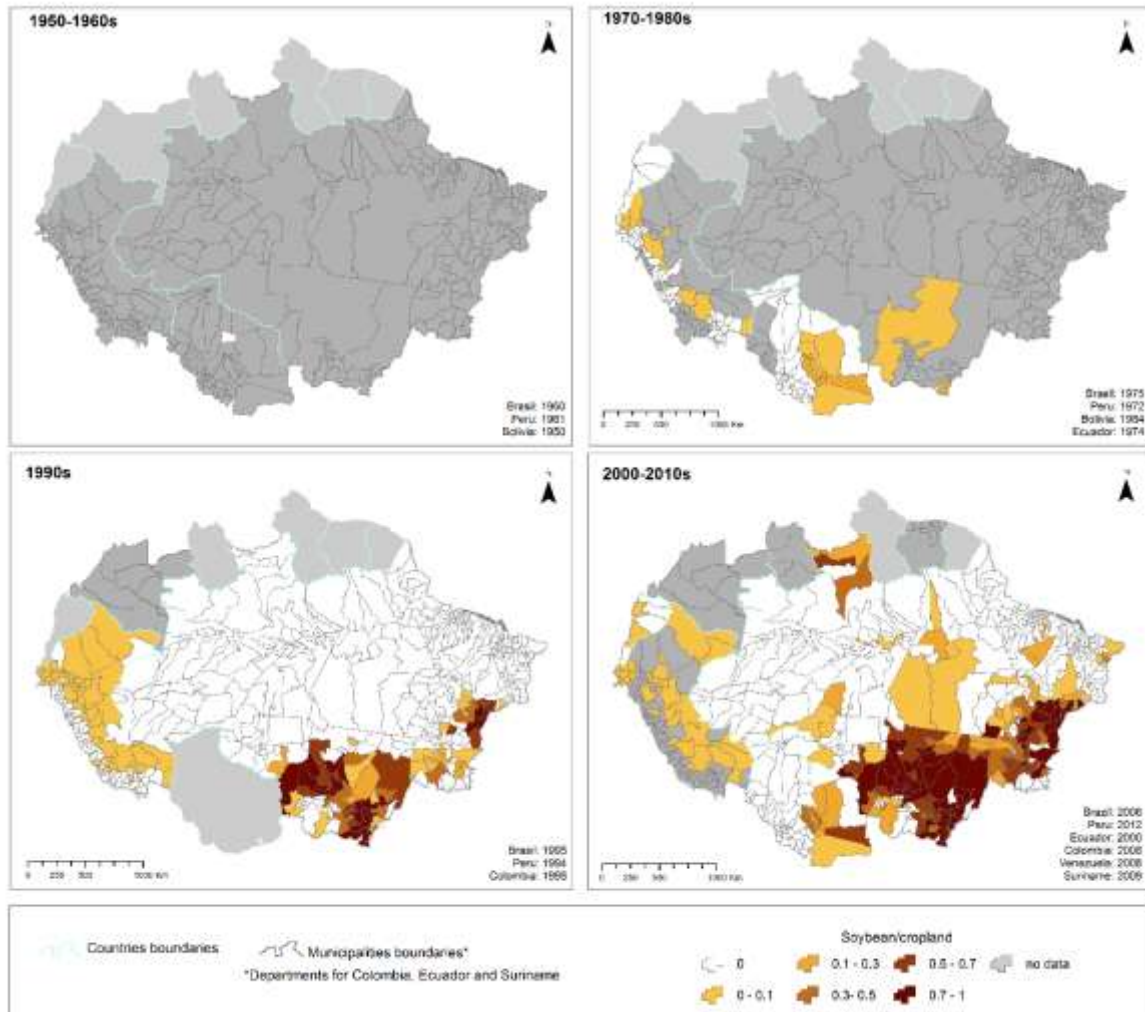


Figure 8. Fraction of soybean among total croplands (not including pasture lands) for each administrative unit and fraction of total agricultural lands (crops and pastures) per municipality. Specific census dates used for the map are indicated for each period.

Accepted